

#### DESCRIPTION

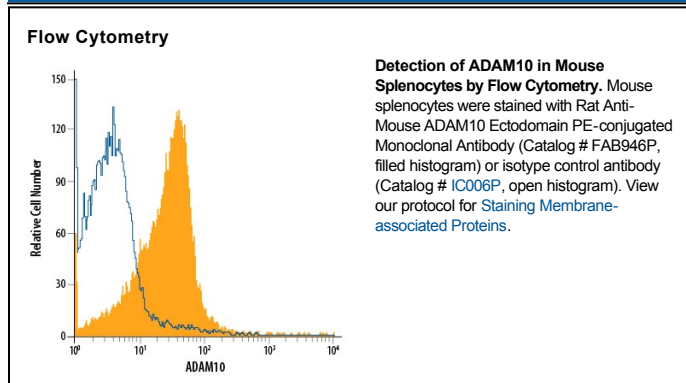
|                           |  |
|---------------------------|--|
| <b>Species Reactivity</b> | Mouse  |
| <b>Specificity</b>        | Detects mouse ADAM10 in direct ELISAs and Western blots. In direct ELISAs, approximately 25% cross-reactivity with recombinant human (rh) rhADAM10 is observed and no cross-reactivity with rhADAM8, recombinant mouse (rm) ADAM9, rmADAM15, rhBACE, or rhTACE is observed.  |
| <b>Source</b>             | Monoclonal Rat IgG <sub>2A</sub> Clone # 139712  |
| <b>Purification</b>       | Protein A or G purified from hybridoma culture supernatant   |
| <b>Immunogen</b>          | <i>S. frugiperda</i> insect ovarian cell line Sf 21-derived recombinant mouse ADAM10<br>Thr215-Glu673<br>Accession # O35598  |
| <b>Conjugate</b>          | Phycoerythrin<br>Excitation Wavelength: 488 nm<br>Emission Wavelength: 565-605 nm  |
| <b>Formulation</b>        | Supplied in a saline solution containing BSA and Sodium Azide. See Certificate of Analysis for details.<br><br>*Contains <0.1% Sodium Azide, which is not hazardous at this concentration according to GHS classifications. Refer to the Safety Data Sheet (SDS) for additional information and handling instructions. |

#### APPLICATIONS

**Please Note:** Optimal dilutions should be determined by each laboratory for each application. *General Protocols* are available in the *Technical Information* section on our website.

|                       | <b>Recommended Concentration</b> | <b>Sample</b> |
|-----------------------|----------------------------------|---------------|
| <b>Flow Cytometry</b> | 10 $\mu$ L/10 <sup>6</sup> cells | See Below     |

#### DATA



#### PREPARATION AND STORAGE

|                                |  |
|--------------------------------|--|
| <b>Shipping</b>                | The product is shipped with polar packs. Upon receipt, store it immediately at the temperature recommended below.                                  |
| <b>Stability &amp; Storage</b> | <b>Protect from light. Do not freeze.</b> <ul style="list-style-type: none"> <li>12 months from date of receipt, 2 to 8 °C as supplied.</li> </ul> |

#### BACKGROUND

ADAM10 (also known as Kuzbanian, mammalian disintegrin metalloprotease, myelin-associated metalloproteinase) is a member of the ADAM family that contains a disintegrin and metalloprotease-like domain (1, 2). Like other membrane-anchored ADAMs, ADAM10 consists of the following domains, pro with a cysteine switch and furin cleavage sequence, catalytic with the zinc-binding site and Met-turn expected for reprolysins, disintegrin-like, cysteine-rich, EGF-like, transmembrane, and cytoplasmic. ADAM10 is highly conserved, with 97% amino acid identity between mouse, rat, bovine and human and 45% identity between mouse and Drosophila. The active enzyme processes notch, notch ligand delta, and amyloid protein precursor at the alpha site, playing an important role in neurogenesis (3, 4). It also processes the 26 kDa membrane-anchored pro-tumor necrosis factor- $\alpha$  (TNF- $\alpha$ ) to the 17 kDa mature TNF- $\alpha$  (5). It cleaves myelin basic protein and type IV collagen (6, 7). ADAM10 is widely expressed in tissues and resides both on the cell surface and in the cell (8, 9).

#### References:

1. Rooke, J. *et al.* (1996) *Science* **273**:1227.
2. Pan, D. and Rubin, G.M. (1997) *Cell* **90**:271.
3. Qi, H. *et al.* (1999) *Science* **283**:91.
4. Lammich, S. *et al.* (1999) *Proc. Natl. Acad. Sci. USA* **96**:3922.
5. Rosendahl, M.S. *et al.* (1997) *J. Biol. Chem.* **272**:24588.
6. Chantry, A. *et al.* (1989) *J. Biol. Chem.* **264**:21603.
7. Millichip, M.I. *et al.* (1998) *Biochem. Biophys. Res. Comm.* **245**:594.
8. Chantry, A. and Glynn, P. (1990) *Biochem. J.* **268**:245.
9. Fahrenholz, F.S. *et al.* (2000) *Ann. N.Y. Acad. Sci.* **920**:215.