

## DESCRIPTION

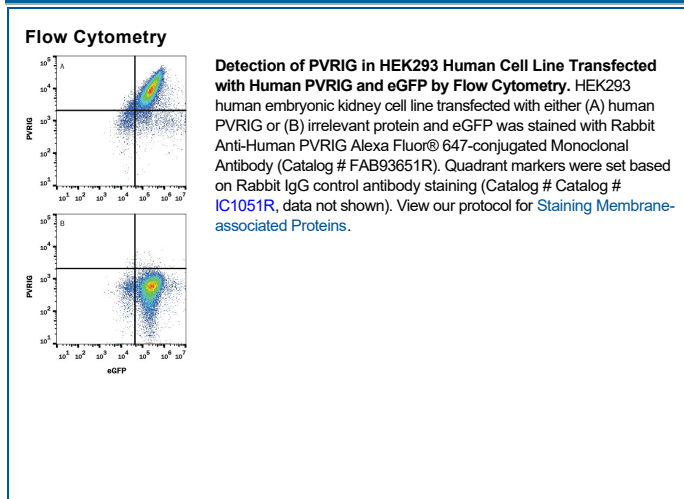
<b>Species Reactivity</b>	Human
<b>Specificity</b>	Detects human PVRIG in direct ELISAs.
<b>Source</b>	Recombinant Monoclonal Rabbit IgG Clone # 2334A
<b>Purification</b>	Protein A or G purified from cell culture supernatant
<b>Immunogen</b>	Human embryonic kidney cell, HEK293-derived human PVRIG protein Thr 41 & Glu43-Leu172 Accession # Q6DK17
<b>Conjugate</b>	Alexa Fluor 647 Excitation Wavelength: 650 nm Emission Wavelength: 668 nm
<b>Formulation</b>	Supplied in a saline solution containing BSA and Sodium Azide. See Certificate of Analysis for details.  *Contains <0.1% Sodium Azide, which is not hazardous at this concentration according to GHS classifications. Refer to the Safety Data Sheet (SDS) for additional information and handling instructions.

## APPLICATIONS

**Please Note:** Optimal dilutions should be determined by each laboratory for each application. [General Protocols](#) are available in the Technical Information section on our website.

	Recommended Concentration	Sample
<b>Flow Cytometry</b>	0.25-1 µg/10 <sup>6</sup> cells	See Below

## DATA



## PREPARATION AND STORAGE

<b>Shipping</b>	The product is shipped with polar packs. Upon receipt, store it immediately at the temperature recommended below.
<b>Stability &amp; Storage</b>	<b>Protect from light. Do not freeze.</b> <ul style="list-style-type: none"> <li>12 months from date of receipt, 2 to 8 °C as supplied.</li> </ul>

## BACKGROUND

Human PVRIG (poliovirus receptor related immunoglobulin domain-containing protein), also known as CD112 receptor (CD112R), is an approximately 34 kDa single transmembrane protein in the poliovirus receptor-like protein (PVR) family (1). It is composed of a single extracellular IgV domain, one transmembrane domain, and a long intracellular domain. The intracellular domain contains two tyrosine residues, one within an ITIM-like motif that is a potential docking site for phosphatases (1). The extracellular domain sequence of human and mouse PVRIG have approximately 65% similarity. The human PVRIG gene is preferentially expressed in lymphocytes, such as T cells and NK cells, but not in monocyte derived dendritic cells (1). PVRIG functions as a cell surface receptor for Nectin-2/CD112, a cell surface protein that is widely expressed on antigen-presenting cells and tumor cells. Disrupting the PVRIG/Nectin-2 interaction enhances human T cell response, suggesting PVRIG is a novel checkpoint for human T cells (1).

### References:

- Zhu, Y., *et al.* (2016) J. Exp. Med. **213**:167.

**PRODUCT SPECIFIC NOTICES**

This product is provided under an agreement between Life Technologies Corporation and R&D Systems, Inc, and the manufacture, use, sale or import of this product is subject to one or more US patents and corresponding non-US equivalents, owned by Life Technologies Corporation and its affiliates. The purchase of this product conveys to the buyer the non-transferable right to use the purchased amount of the product and components of the product only in research conducted by the buyer (whether the buyer is an academic or for-profit entity). The sale of this product is expressly conditioned on the buyer not using the product or its components (1) in manufacturing; (2) to provide a service, information, or data to an unaffiliated third party for payment; (3) for therapeutic, diagnostic or prophylactic purposes; (4) to resell, sell, or otherwise transfer this product or its components to any third party, or for any other commercial purpose. Life Technologies Corporation will not assert a claim against the buyer of the infringement of the above patents based on the manufacture, use or sale of a commercial product developed in research by the buyer in which this product or its components was employed, provided that neither this product nor any of its components was used in the manufacture of such product. For information on purchasing a license to this product for purposes other than research, contact Life Technologies Corporation, Cell Analysis Business Unit, Business Development, 29851 Willow Creek Road, Eugene, OR 97402, Tel: (541) 465-8300. Fax: (541) 335-0354.