

DESCRIPTION

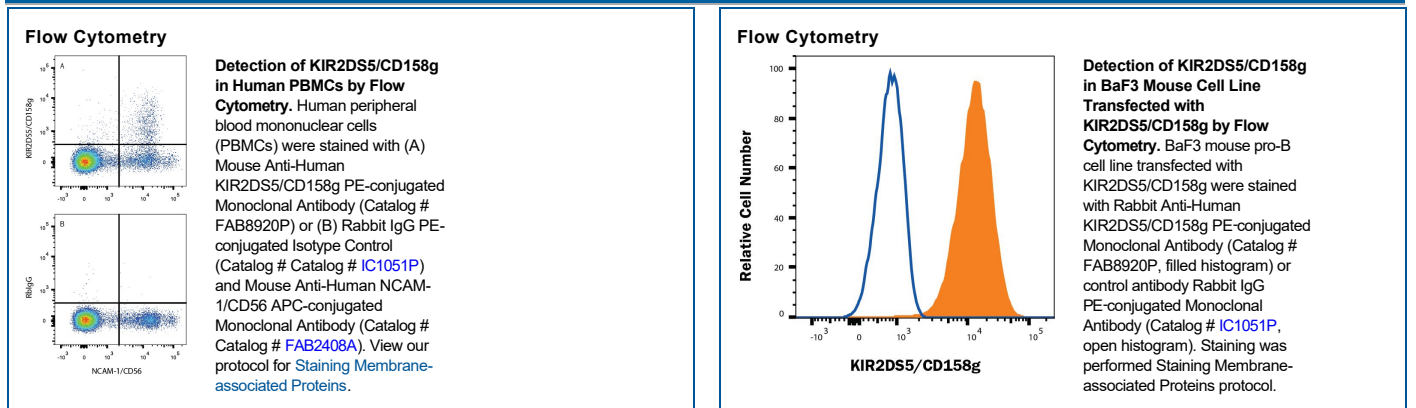
Species Reactivity	Human
Specificity	Detects human KIR2DS5/CD158g in direct ELISAs.
Source	Monoclonal Rabbit IgG Clone # 1165A
Purification	Protein A or G purified from cell culture supernatant
Immunogen	NS0 mouse myeloma cell line transfected with human KIR2DS5/CD158g His22-His245 Accession # Q14953
Conjugate	Phycoerythrin Excitation Wavelength: 488 nm Emission Wavelength: 565-605 nm
Formulation	Supplied in a saline solution containing BSA and Sodium Azide. See Certificate of Analysis for details. *Contains <0.1% Sodium Azide, which is not hazardous at this concentration according to GHS classifications. Refer to the Safety Data Sheet (SDS) for additional information and handling instructions.

APPLICATIONS

Please Note: Optimal dilutions should be determined by each laboratory for each application. [General Protocols](#) are available in the Technical Information section on our website.

	Recommended Concentration	Sample
Flow Cytometry	10 μ L/10 ⁶ cells	See Below

DATA



PREPARATION AND STORAGE

Shipping	The product is shipped with polar packs. Upon receipt, store it immediately at the temperature recommended below.
Stability & Storage	Protect from light. Do not freeze. <ul style="list-style-type: none"> 12 months from date of receipt, 2 to 8 °C as supplied.

BACKGROUND

Killer-immunoglobulin-like receptors (KIR) are polymorphous activating and inhibitory receptors expressed on the surface of NK cells and some T cells. KIR genes are highly homologous. KIR proteins expressing the long (L) cytoplasmic domain are inhibitory, while KIRs with short (S) cytoplasmic domains are activating. Thus, KIR2DS5 is an activating receptor for NK cells, and is thought to play a role in NK cell function in response to a number of conditions. While many KIR proteins bind HLA-class I molecules, the ligand(s) for KIR2DS5 remain unknown.