

## DESCRIPTION

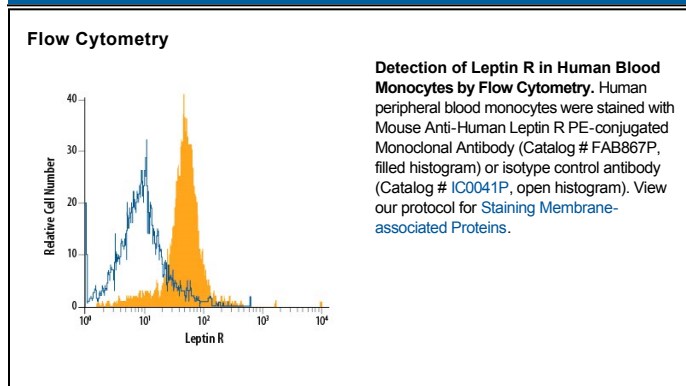
<b>Species Reactivity</b>	Human
<b>Specificity</b>	Detects human Leptin R in direct ELISAs and Western blots. In direct ELISAs and Western blots, less than 1% cross-reactivity with recombinant mouse Leptin R is observed.
<b>Source</b>	Monoclonal Mouse IgG <sub>2B</sub> Clone # 52263
<b>Purification</b>	Protein A or G purified from ascites
<b>Immunogen</b>	Mouse myeloma cell line NS0-derived recombinant human Leptin R Phe22-Asp839 (predicted) Accession # P48357
<b>Conjugate</b>	Phycoerythrin Excitation Wavelength: 488 nm Emission Wavelength: 565-605 nm
<b>Formulation</b>	Supplied in a saline solution containing BSA and Sodium Azide. See Certificate of Analysis for details.  *Contains <0.1% Sodium Azide, which is not hazardous at this concentration according to GHS classifications. Refer to the Safety Data Sheet (SDS) for additional information and handling instructions.

## APPLICATIONS

**Please Note:** Optimal dilutions should be determined by each laboratory for each application. *General Protocols* are available in the *Technical Information* section on our website.

	Recommended Concentration	Sample
<b>Flow Cytometry</b>	10 $\mu$ L/10 <sup>6</sup> cells	See Below

## DATA



## PREPARATION AND STORAGE

<b>Shipping</b>	The product is shipped with polar packs. Upon receipt, store it immediately at the temperature recommended below.
<b>Stability &amp; Storage</b>	<b>Protect from light. Do not freeze.</b> ● 12 months from date of receipt, 2 to 8 °C as supplied.

## BACKGROUND

Leptin receptor (OB-R), also named B219, is a type I cytokine receptor family protein with significant amino acid sequence identity with gp130, G-CSF receptor, and the LIF receptor. Multiple isoforms of human and mouse OB-R, including a long form (OB-R<sub>L</sub>) with a large cytoplasmic domain capable of signal-transduction, and several receptor isoforms with short cytoplasmic domains (OB-R<sub>S</sub>) lacking signal-transducing capabilities, have been identified. The extracellular domains of the short and long forms of OB-R are identical. An OB-R transcript, lacking a transmembrane domain and potentially encoding a soluble form of the receptor, has also been described. OB-R<sub>L</sub> transcripts were reported to be expressed predominantly in regions of the hypothalamus previously thought to be important in body weight regulation. Expression of OB-R<sub>S</sub> transcripts have been found in multiple tissues, including the choroid plexus, lung, kidney, and primitive hematopoietic cell populations. OB-R has been shown to be encoded by the mouse diabetes (*db*) and rat fatty (*fa*) genes. Rodents homozygous for the *db* or *fa* mutations have been known to exhibit an obesity phenotype. Human OB-R long form encodes a 1165 amino acid (aa) precursor protein with a 22 aa signal peptide, an 819 aa extracellular domain, a 21 aa transmembrane domain and a 303 aa cytoplasmic domain. The extracellular domain of OB-R contain two hemopoietin receptor domains, a fibronectin type III domain and the WSXWS domain. Recombinant soluble OB-R has been shown to bind Leptin with high affinity and is a potent Leptin antagonist.

### References:

1. Tartaglia, L.A. *et al.* (1995) *Cell* **83**:1263.
2. Cioffi, J.A. *et al.* (1996) *Nature Medicine* **2**:585.
3. Tartaglia, L.A. (1997) *J. Biol. Chem.* **272**:6093.