

DESCRIPTION

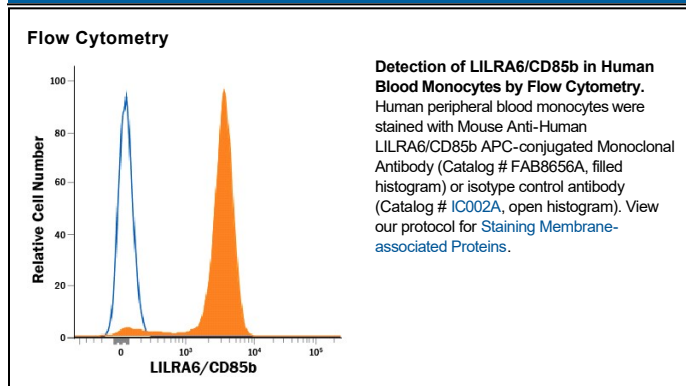
Species Reactivity	Human
Specificity	Detects human LILRA6/CD85b in direct ELISA. Detects HEK293 cells transfected with LILRA6/CD85b but not irrelevant transfectants.
Source	Monoclonal Mouse IgG ₁ Clone # 921330
Purification	Protein A or G purified from hybridoma culture supernatant
Immunogen	HEK293 human embryonic kidney cell line-derived recombinant human LILRA6/CD85b Met1-Asn447 Accession # Q6PI73
Conjugate	Allophycocyanin Excitation Wavelength: 620-650 nm Emission Wavelength: 660-670 nm
Formulation	Supplied in a saline solution containing BSA and Sodium Azide. See Certificate of Analysis for details. *Contains <0.1% Sodium Azide, which is not hazardous at this concentration according to GHS classifications. Refer to the Safety Data Sheet (SDS) for additional information and handling instructions.

APPLICATIONS

Please Note: Optimal dilutions should be determined by each laboratory for each application. *General Protocols* are available in the *Technical Information* section on our website.

	Recommended Concentration	Sample
Flow Cytometry	10 μ L/10 ⁶ cells	See Below

DATA



PREPARATION AND STORAGE

Shipping	The product is shipped with polar packs. Upon receipt, store it immediately at the temperature recommended below.
Stability & Storage	Protect from light. Do not freeze. <ul style="list-style-type: none"> 12 months from date of receipt, 2 to 8 °C as supplied.

BACKGROUND

LILRA6 (Leukocyte Immunoglobulin-like Receptor subfamily A, member 6) is also known as ILT5 and CD85b. The leukocyte immunoglobulin-like receptors (LILR) are a family of receptors possessing extracellular immunoglobulin domains. They are also known as ILTs and can exert immunomodulatory effects on a wide range of immune cells. LILRA6 is a highly polymorphic surface molecule that is one of the targets of dendritic cell-reactive antibodies.