

DESCRIPTION

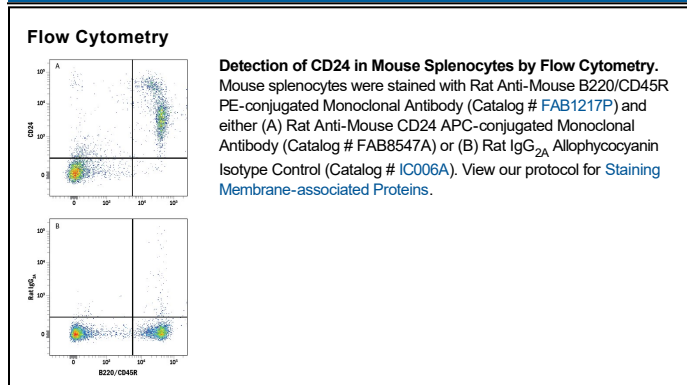
Species Reactivity	Mouse
Specificity	Detects mouse CD24a in direct ELISAs.
Source	Recombinant Monoclonal Rat IgG _{2A} Clone # 910019
Purification	Protein A or G purified from cell culture supernatant
Immunogen	Peptide sequence spanning a portion of the extracellular region Accession # P24807
Conjugate	Allophycocyanin Excitation Wavelength: 620-650 nm Emission Wavelength: 660-670 nm
Formulation	Supplied in a saline solution containing BSA and Sodium Azide. See Certificate of Analysis for details. *Contains <0.1% Sodium Azide, which is not hazardous at this concentration according to GHS classifications. Refer to the Safety Data Sheet (SDS) for additional information and handling instructions.

APPLICATIONS

Please Note: Optimal dilutions should be determined by each laboratory for each application. *General Protocols* are available in the *Technical Information* section on our website.

	Recommended Concentration	Sample
Flow Cytometry	0.25-1 µg/10 ⁶ cells	See Below

DATA



PREPARATION AND STORAGE

Shipping	The product is shipped with polar packs. Upon receipt, store it immediately at the temperature recommended below.
Stability & Storage	Protect from light. Do not freeze. <ul style="list-style-type: none"> ● 12 months from date of receipt, 2 to 8 °C as supplied.

BACKGROUND

CD24, also known as Heat Stable Antigen (HSA), is a heavily and variably glycosylated 35-60 kDa GPI-linked sialoprotein. CD24 is expressed on B cells, T cells, keratinocytes, and myofiber synaptic nuclei and is upregulated in a wide variety of cancers. It is also a marker for exosomes released into the urine and amniotic fluid. CD24 binds to P-Selectin on activated platelets and vascular endothelial cells. CD24 ligation induces tumor cell apoptosis and is important for the deletion of autoreactive T cells. Mature mouse CD24 shares 30% aa sequence identity with human CD24.