

DESCRIPTION

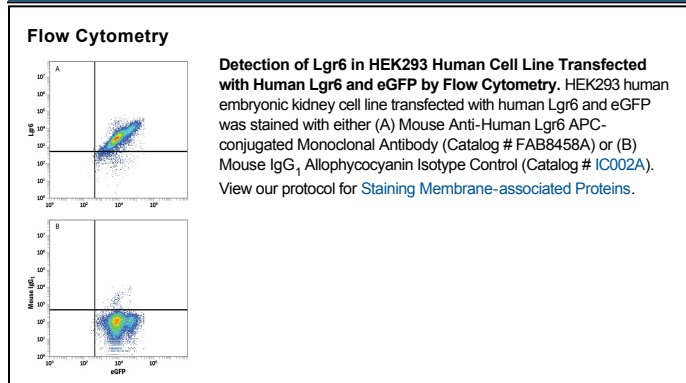
Species Reactivity	Human
Specificity	Stains human Lgr6 transfectants but not irrelevant transfectants in flow cytometry.
Source	Monoclonal Mouse IgG ₁ Clone # 918719
Purification	Protein A or G purified from hybridoma culture supernatant
Immunogen	NS0 mouse myeloma cell line transfected with human Lgr6 Met1-Val967 Accession # Q9HBX8
Conjugate	Allophycocyanin Excitation Wavelength: 620-650 nm Emission Wavelength: 660-670 nm
Formulation	Supplied in a saline solution containing BSA and Sodium Azide. See Certificate of Analysis for details. *Contains <0.1% Sodium Azide, which is not hazardous at this concentration according to GHS classifications. Refer to the Safety Data Sheet (SDS) for additional information and handling instructions.

APPLICATIONS

Please Note: Optimal dilutions should be determined by each laboratory for each application. *General Protocols* are available in the *Technical Information* section on our website.

	Recommended Concentration	Sample
Flow Cytometry	10 μ L/10 ⁶ cells	See Below

DATA



PREPARATION AND STORAGE

Shipping The product is shipped with polar packs. Upon receipt, store it immediately at the temperature recommended below.

Stability & Storage **Protect from light. Do not freeze.**

- 12 months from date of receipt, 2 to 8 °C as supplied.

BACKGROUND

Lgr6 is a glycoprotein hormone receptor phosphorylated upon DNA damage, probably by ATM or ATR. It is a member of the leucine-rich repeat-containing subgroup of the G protein-coupled 7-transmembrane protein superfamily. Lgr6 is a high affinity receptor for R-Spondins 1-3 and potentially functions as a tumor suppressor despite its positive effect on Wnt/ β -Catenin signaling.