

DESCRIPTION

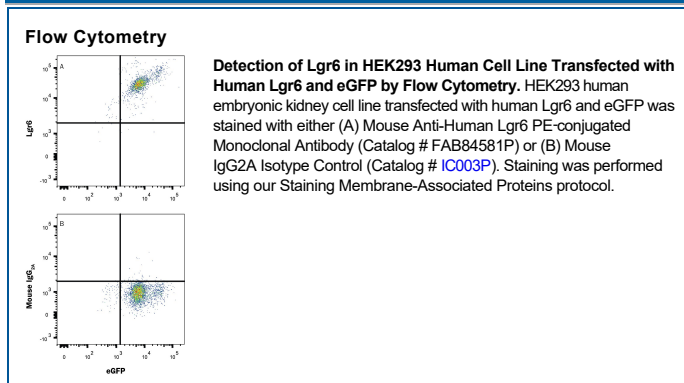
| | |
|---------------------------|--|
| Species Reactivity | Human |
| Specificity | Detects human Lgr6 in direct ELISAs. |
| Source | Monoclonal Mouse IgG _{2A} Clone # 918726 |
| Purification | Protein A or G purified from hybridoma culture supernatant |
| Immunogen | NS0 mouse myeloma cell line transfected with human Lgr6 Met1-Val967 Accession # Q9HBX8 |
| Conjugate | Phycoerythrin Excitation Wavelength: 488 nm Emission Wavelength: 565-605 nm |
| Formulation | Supplied in a saline solution containing BSA and Sodium Azide. See Certificate of Analysis for details. *Contains <0.1% Sodium Azide, which is not hazardous at this concentration according to GHS classifications. Refer to the Safety Data Sheet (SDS) for additional information and handling instructions. |

APPLICATIONS

Please Note: Optimal dilutions should be determined by each laboratory for each application. *General Protocols* are available in the *Technical Information* section on our website.

| | Recommended Concentration | Sample |
|-----------------------|----------------------------------|---------------|
| Flow Cytometry | 10 μ L/10 ⁶ cells | See Below |

DATA



PREPARATION AND STORAGE

| | |
|--------------------------------|--|
| Shipping | The product is shipped with polar packs. Upon receipt, store it immediately at the temperature recommended below. |
| Stability & Storage | Protect from light. Do not freeze. <ul style="list-style-type: none"> 12 months from date of receipt, 2 to 8 °C as supplied. |

BACKGROUND

Lgr6 is a glycoprotein hormone receptor phosphorylated upon DNA damage, probably by ATM or ATR. It is a member of the leucine-rich repeat-containing subgroup of the G protein-coupled 7-transmembrane protein superfamily. Lgr6 is a high affinity receptor for R-Spondins 1-3 and potentially functions as a tumor suppressor despite its positive effect on Wnt/ β -Catenin signaling.