

DESCRIPTION

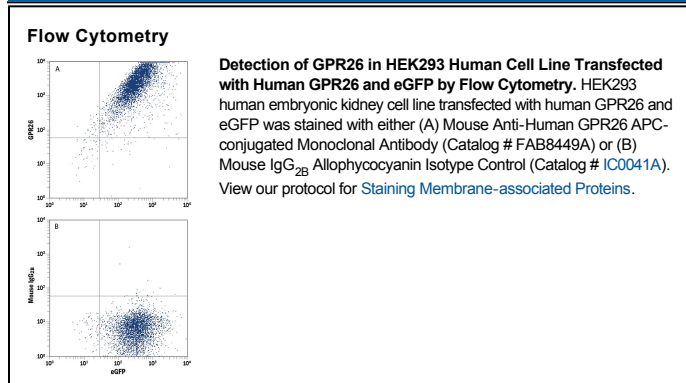
Species Reactivity	Human
Specificity	Stains human GPR26 transfectants but not irrelevant transfectants in flow cytometry.
Source	Monoclonal Mouse IgG _{2B} Clone # 891318
Purification	Protein A or G purified from hybridoma culture supernatant
Immunogen	NS0 mouse myeloma cell line transfected with human GPR26 Met1-Glu337 Accession # Q8NDV2
Conjugate	Allophycocyanin Excitation Wavelength: 620-650 nm Emission Wavelength: 660-670 nm
Formulation	Supplied in a saline solution containing BSA and Sodium Azide. See Certificate of Analysis for details. *Contains <0.1% Sodium Azide, which is not hazardous at this concentration according to GHS classifications. Refer to the Safety Data Sheet (SDS) for additional information and handling instructions.

APPLICATIONS

Please Note: Optimal dilutions should be determined by each laboratory for each application. *General Protocols* are available in the *Technical Information* section on our website.

	Recommended Concentration	Sample
Flow Cytometry	10 μ L/10 ⁶ cells	See Below

DATA



PREPARATION AND STORAGE

Shipping The product is shipped with polar packs. Upon receipt, store it immediately at the temperature recommended below.

Stability & Storage **Protect from light. Do not freeze.**

- 12 months from date of receipt, 2 to 8 °C as supplied.

BACKGROUND

GPR26 is a constitutively active, brain-specific orphan G Protein-Coupled Receptor (GPCR) member of the rhodopsin family of molecules. It is frequently reduced or absent in glioma cells and biopsies. Glioblastomas are highly malignant brain tumors. GPR26 has been proposed to be a genetic indicator of primary glioblastoma, suggesting that it could be a suppressor of primary glioblastoma development.