

DESCRIPTION

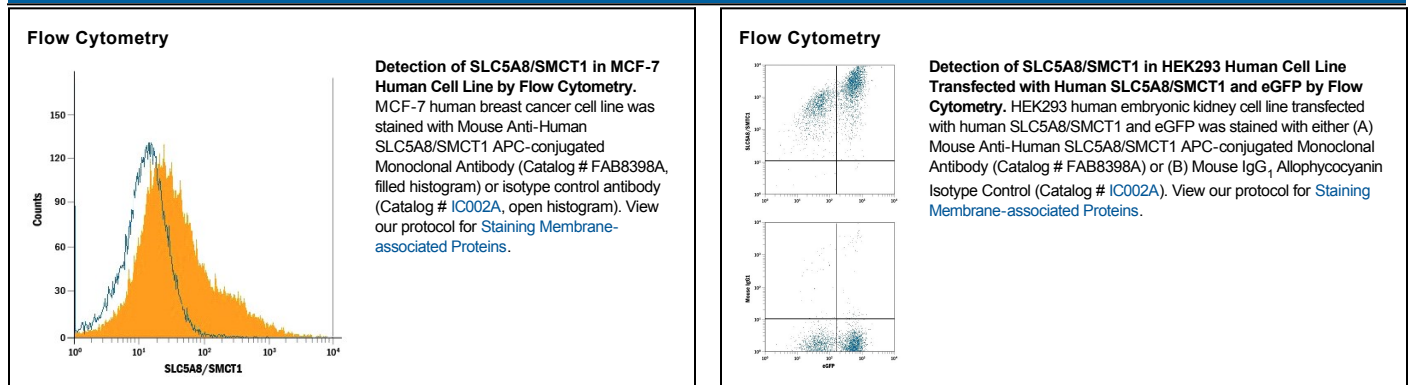
Species Reactivity	Human
Specificity	Detects HEK293 human embryonic kidney cell line transfected with human SLC5A8/SMCT1 by Flow Cytometry. Does not detect untransfected or irrelevant transfected HEK293 cells.
Source	Monoclonal Mouse IgG ₁ Clone # 903502
Purification	Protein A or G purified from hybridoma culture supernatant
Immunogen	NS0 mouse myeloma cell line transfected with human SLC5A8/SMCT1 Met1-Leu610 Accession # NP_666018
Conjugate	Allophycocyanin Excitation Wavelength: 620-650 nm Emission Wavelength: 660-670 nm
Formulation	Supplied in a saline solution containing BSA and Sodium Azide. See Certificate of Analysis for details. *Contains <0.1% Sodium Azide, which is not hazardous at this concentration according to GHS classifications. Refer to the Safety Data Sheet (SDS) for additional information and handling instructions.

APPLICATIONS

Please Note: Optimal dilutions should be determined by each laboratory for each application. *General Protocols* are available in the *Technical Information* section on our website.

	Recommended Concentration	Sample
Flow Cytometry	10 μ L/10 ⁶ cells	See Below

DATA



PREPARATION AND STORAGE

Shipping	The product is shipped with polar packs. Upon receipt, store it immediately at the temperature recommended below.
Stability & Storage	Protect from light. Do not freeze. <ul style="list-style-type: none"> ● 12 months from date of receipt, 2 to 8 °C as supplied.

BACKGROUND

SLC5A8/SMCT1 (Solute Carrier family 5, member 8) is a member of the solute carrier family of multi-pass membrane proteins. SLC5A8 has been shown to transport iodide by a passive mechanism. It also transports monocarboxylates and short-chain fatty acids by a sodium-coupled mechanism. SLC5A8 nuclear translocation and loss of expression are associated with poor outcome in pancreatic ductal adenocarcinoma (1). It may be responsible for the absorption of D-lactate and monocarboxylate drugs from the intestinal tract.

References:

1. Helm, J. *et al.* (2012) *Pancreas* **41**:904.