

DESCRIPTION

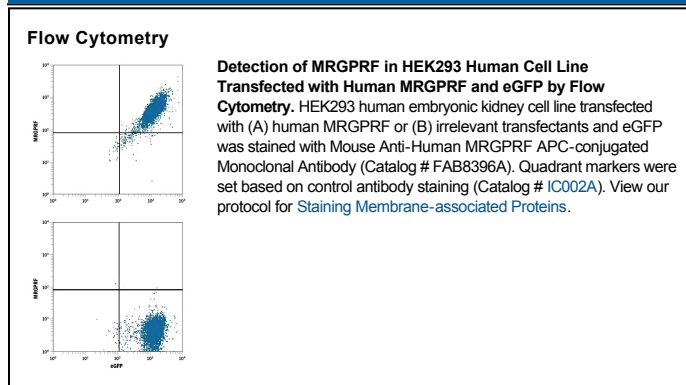
Species Reactivity	Human
Specificity	Detects HEK293 human embryonic kidney cell line transfected with human MRGPRF by Flow Cytometry. Does not detect untransfected or irrelevant transfected HEK293 cells.
Source	Monoclonal Mouse IgG ₁ Clone # 916219
Purification	Protein A or G purified from hybridoma culture supernatant
Immunogen	NS0 mouse myeloma cell line transfected with human MRGPRF Met1-Ser343 Accession # NP_659452
Conjugate	Allophycocyanin Excitation Wavelength: 620-650 nm Emission Wavelength: 660-670 nm
Formulation	Supplied in a saline solution containing BSA and Sodium Azide. See Certificate of Analysis for details. *Contains <0.1% Sodium Azide, which is not hazardous at this concentration according to GHS classifications. Refer to the Safety Data Sheet (SDS) for additional information and handling instructions.

APPLICATIONS

Please Note: Optimal dilutions should be determined by each laboratory for each application. *General Protocols* are available in the *Technical Information* section on our website.

	Recommended Concentration	Sample
Flow Cytometry	10 μ L/10 ⁶ cells	See Below

DATA



PREPARATION AND STORAGE

Shipping The product is shipped with polar packs. Upon receipt, store it immediately at the temperature recommended below.

Stability & Storage **Protect from light. Do not freeze.**

- 12 months from date of receipt, 2 to 8 °C as supplied.

BACKGROUND

MRGPRF (MAS-related GPR, Member F), also known as RTA, MRGF, GPR140 or GPR168, belongs to the G protein coupled receptor 1 family. MRGPRF may be upregulated during the process of CSF-1 or GM-CSF-induced human monocyte to macrophage differentiation (1).

References:

1. Hohenhaus D.M., *et al.* (2013) Immunobiology **218**:1345.