

## DESCRIPTION

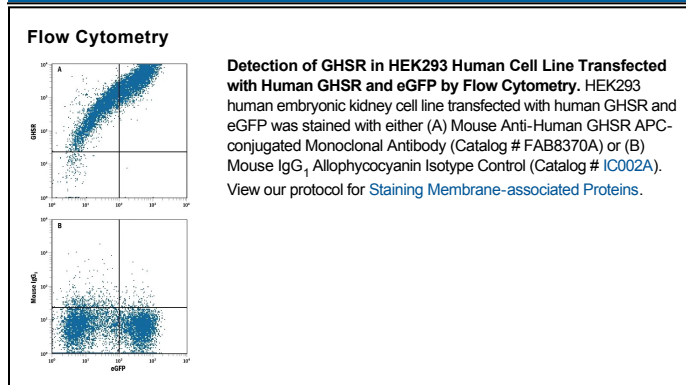
<b>Species Reactivity</b>	Human
<b>Specificity</b>	Detects GHSR on transfectants by flow cytometry.
<b>Source</b>	Monoclonal Mouse IgG <sub>1</sub> Clone # 502430
<b>Purification</b>	Protein A or G purified from hybridoma culture supernatant
<b>Immunogen</b>	NS0 mouse myeloma cell line transfected with human GHSR Accession # NP_940799
<b>Conjugate</b>	Allophycocyanin Excitation Wavelength: 620-650 nm Emission Wavelength: 660-670 nm
<b>Formulation</b>	Supplied in a saline solution containing BSA and Sodium Azide. See Certificate of Analysis for details.  *Contains <0.1% Sodium Azide, which is not hazardous at this concentration according to GHS classifications. Refer to the Safety Data Sheet (SDS) for additional information and handling instructions.

## APPLICATIONS

**Please Note:** Optimal dilutions should be determined by each laboratory for each application. *General Protocols* are available in the *Technical Information* section on our website.

	Recommended Concentration	Sample
<b>Flow Cytometry</b>	10 $\mu$ L/10 <sup>6</sup> cells	See Below

## DATA



## PREPARATION AND STORAGE

<b>Shipping</b>	The product is shipped with polar packs. Upon receipt, store it immediately at the temperature recommended below.
<b>Stability &amp; Storage</b>	<b>Protect from light. Do not freeze.</b> <ul style="list-style-type: none"> <li>12 months from date of receipt, 2 to 8 °C as supplied.</li> </ul>

## BACKGROUND

GHSR is a member of the G protein-coupled receptor family that may play a role in energy homeostasis and regulation of body weight. Two conserved transcript variants for GHSR are expressed in several tissues. This transcript, 1a, excises an intron and encodes the functional protein. GHSR is the receptor for the Ghrelin ligand and defines a neuroendocrine pathway for growth hormone release. Mutations in GHSR are associated with autosomal idiopathic short stature.