

## DESCRIPTION

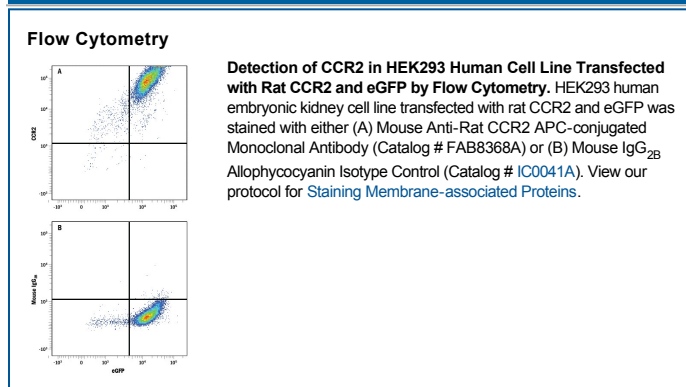
<b>Species Reactivity</b>	Rat
<b>Specificity</b>	Stains rat CCR2 transfectants but not irrelevant transfectants in flow cytometry.
<b>Source</b>	Monoclonal Mouse IgG <sub>2B</sub> Clone # 890231
<b>Purification</b>	Protein A or G purified from hybridoma culture supernatant
<b>Immunogen</b>	NS0 mouse myeloma cell line transfected with rat CCR2 Accession # O55193
<b>Conjugate</b>	Allophycocyanin Excitation Wavelength: 620-650 nm Emission Wavelength: 660-670 nm
<b>Formulation</b>	Supplied in a saline solution containing BSA and Sodium Azide. See Certificate of Analysis for details.  *Contains <0.1% Sodium Azide, which is not hazardous at this concentration according to GHS classifications. Refer to the Safety Data Sheet (SDS) for additional information and handling instructions.

## APPLICATIONS

**Please Note:** Optimal dilutions should be determined by each laboratory for each application. *General Protocols* are available in the *Technical Information* section on our website.

	Recommended Concentration	Sample
<b>Flow Cytometry</b>	0.25-1 µg/10 <sup>6</sup> cells	See Below

## DATA



## PREPARATION AND STORAGE

<b>Shipping</b>	The product is shipped with polar packs. Upon receipt, store it immediately at the temperature recommended below.
<b>Stability &amp; Storage</b>	<b>Protect from light. Do not freeze.</b> <ul style="list-style-type: none"> <li>● 12 months from date of receipt, 2 to 8 °C as supplied.</li> </ul>

## BACKGROUND

CCR2, also known as CD192, is a 38 kDa 7TM chemokine receptor that preferentially binds CCL2, CCL7, and CCL13. CCR2 is expressed by multiple hematopoietic cells, endothelial cells, fibroblasts, neurons, and smooth muscle cells. It functions as an HIV fusion co-factor and facilitates T cell recruitment during inflammation. Two alternate splice forms (CCR2A and CCR2B) differ only by the addition of 14 amino acids to the intracellular carboxyl terminal. Rat CCR2 shares 95% aa sequence identity with mouse CCR2.