

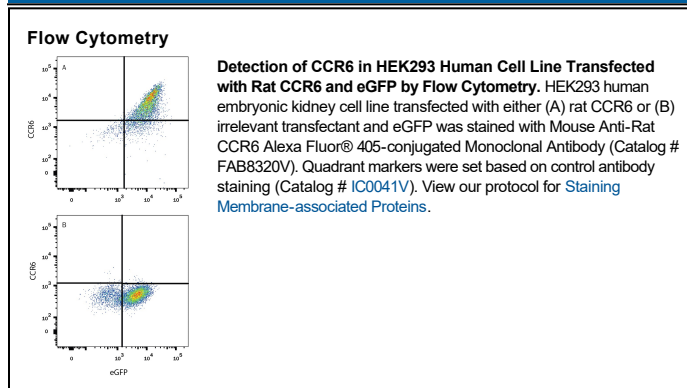
DESCRIPTION	
Species Reactivity	Rat
Specificity	Detects rat CCR6 in direct ELISAs.
Source	Monoclonal Mouse IgG _{2B} Clone # 876515
Purification	Protein A or G purified from hybridoma culture supernatant
Immunogen	NSO mouse myeloma cell line transfected with rat CCR6 Met1-Met366 Accession # Q5BK58
Conjugate	Alexa Fluor 405 Excitation Wavelength: 405 nm Emission Wavelength: 421 nm
Formulation	Supplied 0.2 mg/mL in a saline solution containing BSA and Sodium Azide. See Certificate of Analysis for details. *Contains <0.1% Sodium Azide, which is not hazardous at this concentration according to GHS classifications. Refer to the Safety Data Sheet (SDS) for additional information and handling instructions.

APPLICATIONS

Please Note: Optimal dilutions should be determined by each laboratory for each application. *General Protocols* are available in the *Technical Information* section on our website.

	Recommended Concentration	Sample
Flow Cytometry	0.25-1 µg/10 ⁶ cells	See Below

DATA



PREPARATION AND STORAGE

Shipping	The product is shipped with polar packs. Upon receipt, store it immediately at the temperature recommended below.
Stability & Storage	Protect from light. Do not freeze. <ul style="list-style-type: none"> 12 months from date of receipt, 2 to 8 °C as supplied.

BACKGROUND

CCR6 is an approximately 45 kDa G-protein linked seven transmembrane domain receptor that binds the chemokine CCL20/MIP-3α. Among hematopoietic cells, CCR6 is expressed on B cells, immature dendritic cells, neutrophils, and various T cell subsets (e.g. CD4⁺ T cells, regulatory T cells, effector memory Th17 cells, and g/d T cells). It is upregulated in several cancers, Alzheimer's brain, and the airways in obstructive pulmonary disease. CCR6 plays an important role in mucosal immunity, IgE mediated allergic reactions, immune cell infiltration into sites of inflammation, and tumor cell invasiveness. It also promotes chemotaxis and tumor angiogenesis in response to beta defensins. Rat CCR6 shares 74% and 87% amino acid sequence identity with human and mouse CCR6, respectively.

PRODUCT SPECIFIC NOTICES

This product is provided under an agreement between Life Technologies Corporation and R&D Systems, Inc, and the manufacture, use, sale or import of this product is subject to one or more US patents and corresponding non-US equivalents, owned by Life Technologies Corporation and its affiliates. The purchase of this product conveys to the buyer the non-transferable right to use the purchased amount of the product and components of the product only in research conducted by the buyer (whether the buyer is an academic or for-profit entity). The sale of this product is expressly conditioned on the buyer not using the product or its components (1) in manufacturing; (2) to provide a service, information, or data to an unaffiliated third party for payment; (3) for therapeutic, diagnostic or prophylactic purposes; (4) to resell, sell, or otherwise transfer this product or its components to any third party, or for any other commercial purpose. Life Technologies Corporation will not assert a claim against the buyer of the infringement of the above patents based on the manufacture, use or sale of a commercial product developed in research by the buyer in which this product or its components was employed, provided that neither this product nor any of its components was used in the manufacture of such product. For information on purchasing a license to this product for purposes other than research, contact Life Technologies Corporation, Cell Analysis Business Unit, Business Development, 29851 Willow Creek Road, Eugene, OR 97402, Tel: (541) 465-8300. Fax: (541) 335-0354.