

## DESCRIPTION

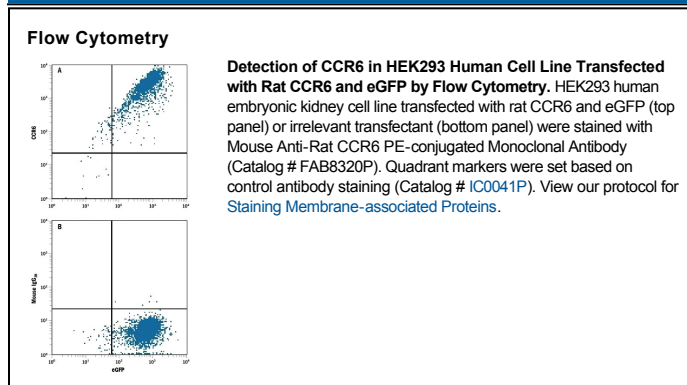
<b>Species Reactivity</b>	Rat
<b>Specificity</b>	Stains rat CCR6 transfectants but not irrelevant transfectants in flow cytometry.
<b>Source</b>	Monoclonal Mouse IgG <sub>2B</sub> Clone # 876515
<b>Purification</b>	Protein A or G purified from hybridoma culture supernatant
<b>Immunogen</b>	NS0 mouse myeloma cell line transfected with rat CCR6 Met1-Met366 Accession # NP_001013163
<b>Conjugate</b>	Phycoerythrin Excitation Wavelength: 488 nm Emission Wavelength: 565-605 nm
<b>Formulation</b>	Supplied in a saline solution containing BSA and Sodium Azide. See Certificate of Analysis for details.  *Contains <0.1% Sodium Azide, which is not hazardous at this concentration according to GHS classifications. Refer to the Safety Data Sheet (SDS) for additional information and handling instructions.

## APPLICATIONS

**Please Note:** Optimal dilutions should be determined by each laboratory for each application. *General Protocols* are available in the *Technical Information* section on our website.

	Recommended Concentration	Sample
<b>Flow Cytometry</b>	10 $\mu$ L/10 <sup>6</sup> cells	See Below

## DATA



## PREPARATION AND STORAGE

**Shipping** The product is shipped with polar packs. Upon receipt, store it immediately at the temperature recommended below.

**Stability & Storage** **Protect from light. Do not freeze.**

- 12 months from date of receipt, 2 to 8 °C as supplied.

## BACKGROUND

CCR6 is a seven transmembrane-spanning G protein-coupled receptor that binds the chemokine MIP-3 $\alpha$  and mediates the chemoattraction of B and T lymphocytes.