

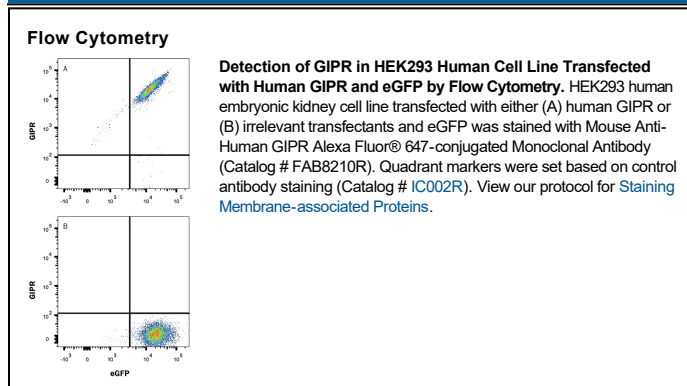
DESCRIPTION	
Species Reactivity	Human
Specificity	Detects human GIPR in direct ELISAs. Stains human GIPR transfected cells but not irrelevant transfectants in flow cytometry.
Source	Monoclonal Mouse IgG ₁ Clone # 591853
Purification	Protein A or G purified from hybridoma culture supernatant
Immunogen	NS0 mouse myeloma cell line transfected with human GIPR Met1-Cys466 Accession # P48546
Conjugate	Alexa Fluor 647 Excitation Wavelength: 650 nm Emission Wavelength: 668 nm
Formulation	Supplied in a saline solution containing BSA and Sodium Azide. See Certificate of Analysis for details. *Contains <0.1% Sodium Azide, which is not hazardous at this concentration according to GHS classifications. Refer to the Safety Data Sheet (SDS) for additional information and handling instructions.

APPLICATIONS

Please Note: Optimal dilutions should be determined by each laboratory for each application. *General Protocols* are available in the *Technical Information* section on our website.

	Recommended Concentration	Sample
Flow Cytometry	5 µL/10 ⁶ cells	See Below

DATA



PREPARATION AND STORAGE

Shipping	The product is shipped with polar packs. Upon receipt, store it immediately at the temperature recommended below.
Stability & Storage	Protect from light. Do not freeze. <ul style="list-style-type: none"> 12 months from date of receipt, 2 to 8 °C as supplied.

BACKGROUND

GIPR is a 7-transmembrane receptor for GIP (glucose-dependent insulinotropic polypeptide or gastric inhibitory polypeptide). The 466 amino acid (aa) human GIPR contains 176 extracellular domain (ECD) aa that share 77% and 81% aa identity with mouse and rat GIPR ECD, respectively. A splice isoform of 430 aa has a deletion of aa 58-93 in the N-terminal ECD, while isoforms of 491 and 419 aa have alternate C-terminal cytoplasmic sequences. Engagement by GIP on pancreatic b-cells activates adenylate cyclase to regulate insulin compensation in the presence of high circulating glucose. GIPR is also expressed on adipocytes, osteoblasts and myelinating Schwann cell membranes.

PRODUCT SPECIFIC NOTICES

This product is provided under an agreement between Life Technologies Corporation and R&D Systems, Inc, and the manufacture, use, sale or import of this product is subject to one or more US patents and corresponding non-US equivalents, owned by Life Technologies Corporation and its affiliates. The purchase of this product conveys to the buyer the non-transferable right to use the purchased amount of the product and components of the product only in research conducted by the buyer (whether the buyer is an academic or for-profit entity). The sale of this product is expressly conditioned on the buyer not using the product or its components (1) in manufacturing; (2) to provide a service, information, or data to an unaffiliated third party for payment; (3) for therapeutic, diagnostic or prophylactic purposes; (4) to resell, sell, or otherwise transfer this product or its components to any third party, or for any other commercial purpose. Life Technologies Corporation will not assert a claim against the buyer of the infringement of the above patents based on the manufacture, use or sale of a commercial product developed in research by the buyer in which this product or its components was employed, provided that neither this product nor any of its components was used in the manufacture of such product. For information on purchasing a license to this product for purposes other than research, contact Life Technologies Corporation, Cell Analysis Business Unit, Business Development, 29851 Willow Creek Road, Eugene, OR 97402, Tel: (541) 465-8300. Fax: (541) 335-0354.