

DESCRIPTION

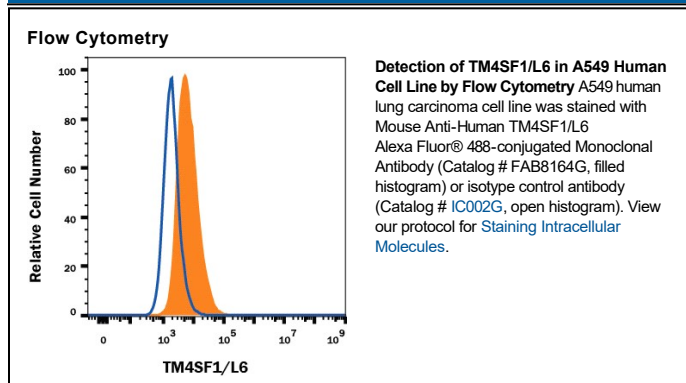
Species Reactivity	Human
Specificity	Detects human TM4SF1/L6 in ELISA. In Flow Cytometry, it stains HEK293 cells transfected with human TM4SF1/L6, and does not stain HEK293 cells transfected with irrelevant human cell surface marker.
Source	Monoclonal Mouse IgG ₁ Clone # 877621
Purification	Protein A or G purified from hybridoma culture supernatant
Immunogen	NS0 mouse myeloma cell line transfected with human TM4SF1/L6 Met1-Cys202 Accession # P30408
Conjugate	Alexa Fluor 488 Excitation Wavelength: 488 nm Emission Wavelength: 515-545 nm
Formulation	Supplied 0.2 mg/mL in a saline solution containing BSA and Sodium Azide. See Certificate of Analysis for details. *Contains <0.1% Sodium Azide, which is not hazardous at this concentration according to GHS classifications. Refer to the Safety Data Sheet (SDS) for additional information and handling instructions.

APPLICATIONS

Please Note: Optimal dilutions should be determined by each laboratory for each application. *General Protocols* are available in the *Technical Information* section on our website.

	Recommended Concentration	Sample
Flow Cytometry	0.25-1 µg/10 ⁶ cells	See Below

DATA



PREPARATION AND STORAGE

Shipping The product is shipped with polar packs. Upon receipt, store it immediately at the temperature recommended below.

Stability & Storage **Protect from light. Do not freeze.**

- 12 months from date of receipt, 2 to 8 °C as supplied.

BACKGROUND

TM4SF1 (Transmembrane 4 L6 family Member 1; also L6 and M3s1) is a 23-28 kDa member of the L6 tetraspanin family of molecules. It is expressed by fibroblasts, endothelial cells and a variety of tumor cells. TM4SF1 is embedded in both the plasma membrane and the membrane of late endocytic organelles. Here, it appears to be ubiquitinated, and to regulate endocytosis, an action that impacts effective cell migration. TM4SF1 is reported to interact with α5 and β1 integrins, and this may impact cell motility. It also suppresses the expression of CD63 and CD82, two molecules that impede cell mobility. Mouse TM4SF1 is a 202 amino acid (aa) 4-transmembrane (TM) glycoprotein. It contains a short N-terminal cytoplasmic region (aa 1-9), followed by four TM regions and another C-terminal cytoplasmic region (aa 183-202). There is one potential isoform variant that shows an alternative start site at Met60. Over aa 116-161, mouse TM4SF1 shares 73% and 96% aa sequence identity with human and rat TM4SF1, respectively.

PRODUCT SPECIFIC NOTICES

This product is provided under an agreement between Life Technologies Corporation and R&D Systems, Inc. and the manufacture, use, sale or import of this product is subject to one or more US patents and corresponding non-US equivalents, owned by Life Technologies Corporation and its affiliates. The purchase of this product conveys to the buyer the non-transferable right to use the purchased amount of the product and components of the product only in research conducted by the buyer (whether the buyer is an academic or for-profit entity). The sale of this product is expressly conditioned on the buyer not using the product or its components (1) in manufacturing; (2) to provide a service, information, or data to an unaffiliated third party for payment; (3) for therapeutic, diagnostic or prophylactic purposes; (4) to resell, sell, or otherwise transfer this product or its components to any third party, or for any other commercial purpose. Life Technologies Corporation will not assert a claim against the buyer of the infringement of the above patents based on the manufacture, use or sale of a commercial product developed in research by the buyer in which this product or its components was employed, provided that neither this product nor any of its components was used in the manufacture of such product. For information on purchasing a license to this product for purposes other than research, contact Life Technologies Corporation, Cell Analysis Business Unit, Business Development, 29851 Willow Creek Road, Eugene, OR 97402, Tel: (541) 465-8300. Fax: (541) 335-0354.