

## DESCRIPTION

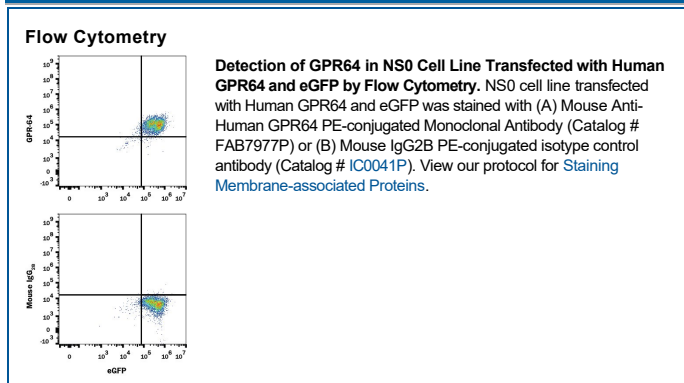
<b>Species Reactivity</b>	Human
<b>Specificity</b>	Detects human GPR64 transfectants in cell-based ELISA and Flow Cytometry.
<b>Source</b>	Monoclonal Mouse IgG <sub>2B</sub> Clone # 206420
<b>Purification</b>	Protein A or G purified from hybridoma culture supernatant
<b>Immunogen</b>	Chinese hamster ovary cell line CHO-derived recombinant human GPR64 Leu38-Asn64, Glu68-Thr553 Accession # NP_001073328
<b>Conjugate</b>	Phycoerythrin Excitation Wavelength: 488 nm Emission Wavelength: 565-605 nm
<b>Formulation</b>	Supplied in a saline solution containing BSA and Sodium Azide. See Certificate of Analysis for details.  *Contains <0.1% Sodium Azide, which is not hazardous at this concentration according to GHS classifications. Refer to the Safety Data Sheet (SDS) for additional information and handling instructions.

## APPLICATIONS

**Please Note:** Optimal dilutions should be determined by each laboratory for each application. [General Protocols](#) are available in the [Technical Information](#) section on our website.

	<b>Recommended Concentration</b>	<b>Sample</b>
<b>Flow Cytometry</b>	10 $\mu$ L/10 <sup>6</sup> cells	See Below

## DATA



## PREPARATION AND STORAGE

<b>Shipping</b>	The product is shipped with polar packs. Upon receipt, store it immediately at the temperature recommended below.
<b>Stability &amp; Storage</b>	<b>Protect from light. Do not freeze.</b> <ul style="list-style-type: none"> <li>12 months from date of receipt, 2 to 8 °C as supplied.</li> </ul>

## BACKGROUND

GPR64 (G-Protein coupled Receptor 64; also HE6) is a 110 kDa (predicted) member of the B class of GPCRs. Within this class GPR64 belongs to a Large N-termini family-B 7-transmembrane (LNB-7TM) subclass of receptors (also known as adhesion-GPCRs). GPR64 has restricted expression, being found in stereocilia cell membranes of epididymal caput epithelial cells and, to a limited extent, on osteoblasts. The function of GPR64 is somewhat unclear, but in the epididymis, it may be involved in fluid transport. Mature human GPR64 is a 980 amino acid (aa) 7-TM glycoprotein (SwissProt Q8IZP9). It contains an extended extracellular N-terminus (aa 38-627), seven consecutive TM segments (aa 628-878) and a C-terminal cytoplasmic tail (aa 879-1010). The extended extracellular region possesses a juxtamembrane GPS domain (aa 567-618) that serves as a proteolytic cleavage site. Enzymatic activity here generates a 180 kDa soluble form that stays associated with a 40 kDa membrane-embedded fragment. Notably, isolation of the membrane fragment gives rise to oligomers that run at > 250 kDa in SDS-PAGE. There are multiple splice variants. The one used for immunization to generate this antibody contains a deletion of aa 88-101 (RefSeq NP\_001073328). Four other splice forms show single block deletions of aa 65-67, 51-66, 52-75, and 906-956, respectively. Three others possess aa substitutions; a 20 aa block for aa 52-101, and a common 12 aa block that can substitute for either aa 68-101 or aa 52-101. Over aa 38-64 and 68-553 of RefSeq NP\_001073328, human and mouse GPR64 share 69% aa sequence identity.