

## DESCRIPTION

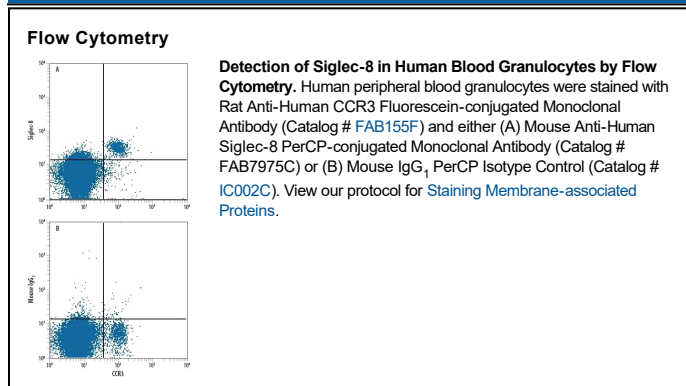
<b>Species Reactivity</b>	Human
<b>Specificity</b>	Detects human Siglec-8 in ELISAs. In direct ELISAs, no cross-reactivity with recombinant human Siglec-7, -9, or -14 is observed.
<b>Source</b>	Monoclonal Mouse IgG <sub>1</sub> Clone # 837535
<b>Purification</b>	Protein A or G purified from hybridoma culture supernatant
<b>Immunogen</b>	Mouse myeloma cell line NS0-derived recombinant human Siglec-8 Met17-Ala363 Accession # Q9NYZ4
<b>Conjugate</b>	PerCP (Peridinin-chlorophyll Protein Complex) Excitation Wavelength: 482 and 564 nm Emission Wavelength: 675 nm
<b>Formulation</b>	Supplied in a saline solution containing BSA and Sodium Azide. See Certificate of Analysis for details.  *Contains <0.1% Sodium Azide, which is not hazardous at this concentration according to GHS classifications. Refer to the Safety Data Sheet (SDS) for additional information and handling instructions.

## APPLICATIONS

**Please Note:** Optimal dilutions should be determined by each laboratory for each application. *General Protocols* are available in the *Technical Information* section on our website.

	Recommended Concentration	Sample
<b>Flow Cytometry</b>	10 $\mu$ L/10 <sup>6</sup> cells	See Below

## DATA



## PREPARATION AND STORAGE

<b>Shipping</b>	The product is shipped with polar packs. Upon receipt, store it immediately at the temperature recommended below.
<b>Stability &amp; Storage</b>	<b>Protect from light. Do not freeze.</b> <ul style="list-style-type: none"> <li>12 months from date of receipt, 2 to 8 °C as supplied.</li> </ul>

## BACKGROUND

Siglec-8 (Sialic acid-binding Ig-like lectin 8), formerly called SAF-2 (sialoadhesin family member 2) and designated CD329, is a 75 kDa member of the inhibitory CD33-related SIGLEC family within the Ig superfamily of proteins. An alternately spliced 48 kDa short form lacks most of the intracellular domain, while another isoform lacks the second of three extracellular Ig domains, representing amino acids (aa) 152-245 of the 499 aa long form. Siglec-8 is expressed exclusively on eosinophils, mast cells, and weakly on basophils, and is a marker for eosinophil terminal differentiation. It specifically recognizes 6' sulfated sialyl Lewis X carbohydrate structures. Engagement results in eosinophils apoptosis, or mast cell inhibition of degranulation. Eosinophil Siglec F is the mouse paralog of human Siglec-8, but shares <40% amino acid sequence identity.