

DESCRIPTION

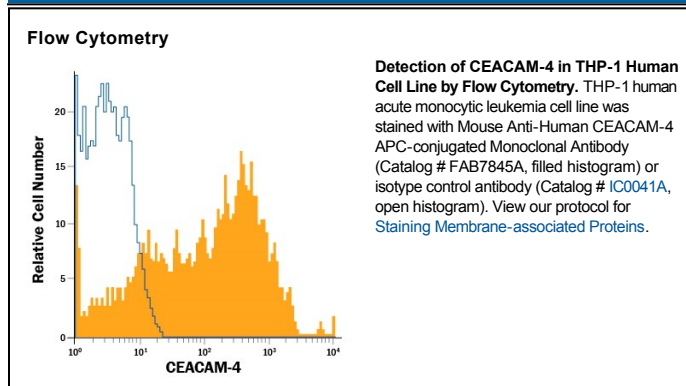
Species Reactivity	Human
Specificity	Detects human CEACAM-4 in direct ELISAs.
Source	Monoclonal Mouse IgG _{2B} Clone # 822608
Purification	Protein A or G purified from hybridoma culture supernatant
Immunogen	<i>E.coli</i> -derived recombinant human CEACAM-4 Phe36-Val140 Accession # O75871
Conjugate	Allophycocyanin Excitation Wavelength: 620-650 nm Emission Wavelength: 660-670 nm
Formulation	Supplied in a saline solution containing BSA and Sodium Azide. See Certificate of Analysis for details. *Contains <0.1% Sodium Azide, which is not hazardous at this concentration according to GHS classifications. Refer to the Safety Data Sheet (SDS) for additional information and handling instructions.

APPLICATIONS

Please Note: Optimal dilutions should be determined by each laboratory for each application. *General Protocols* are available in the *Technical Information* section on our website.

	Recommended Concentration	Sample
Flow Cytometry	10 μ L/10 ⁶ cells	See Below

DATA



PREPARATION AND STORAGE

Shipping	The product is shipped with polar packs. Upon receipt, store it immediately at the temperature recommended below.
Stability & Storage	Protect from light. Do not freeze. <ul style="list-style-type: none"> 12 months from date of receipt, 2 to 8 °C as supplied.

BACKGROUND

Carcinoembryonic Antigen Cell Adhesion Molecule 4 (CEACAM-4), also known as CGM7 and W236, is a 40 kDa transmembrane glycoprotein member of the CEACAM family of proteins. Its 209 amino acid extracellular domain contains one Ig-like V-type domain. CEACAM-4 is expressed on granulocytes as well as on B and T cell lymphoblastic leukemias. Mouse and rat orthologs of CEACAM-4 have not been described.