

DESCRIPTION

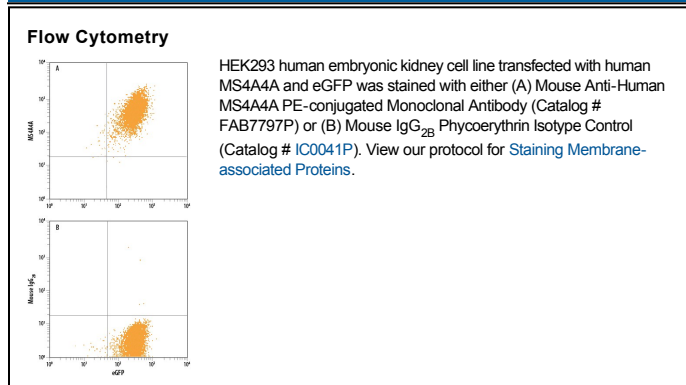
Species Reactivity	Human
Specificity	Detects human MS4A4A.
Source	Monoclonal Mouse IgG _{2B} Clone # 818112
Purification	Protein A or G purified from hybridoma culture supernatant
Immunogen	Mouse myeloma cell line NS0 transfected with human MS4A4A Accession # Q96JQ5
Conjugate	Phycoerythrin Excitation Wavelength: 488 nm Emission Wavelength: 565-605 nm
Formulation	Supplied in a saline solution containing BSA and Sodium Azide. See Certificate of Analysis for details. *Contains <0.1% Sodium Azide, which is not hazardous at this concentration according to GHS classifications. Refer to the Safety Data Sheet (SDS) for additional information and handling instructions.

APPLICATIONS

Please Note: Optimal dilutions should be determined by each laboratory for each application. *General Protocols* are available in the *Technical Information* section on our website.

	Recommended Concentration	Sample
Flow Cytometry	10 μ L/10 ⁶ cells	See Below

DATA



PREPARATION AND STORAGE

Shipping	The product is shipped with polar packs. Upon receipt, store it immediately at the temperature recommended below.
Stability & Storage	Protect from light. Do not freeze. <ul style="list-style-type: none"> 12 months from date of receipt, 2 to 8 °C as supplied.

BACKGROUND

MS4A4A, also called CD20-like 1, is a 23 kDa (predicted) member of the MS4A family of four-transmembrane proteins that includes CD20 (MS4A1) and Fce R1b (MS4A2). MS4A4 cDNA is detected in hematopoietic cell lines, with highest expression in myeloid and B cell lines. Expressed sequence tags are detected in multiple organs and tissues. Human MS4A4A shares ~60% amino acid sequence identity with mouse and rat MS4A4A, if sequence gaps at the cytoplasmic N and C termini are disregarded. One potential isoform lacks aa 130-182, which includes the 3rd transmembrane segment and the first of two extracellular regions.