

## DESCRIPTION

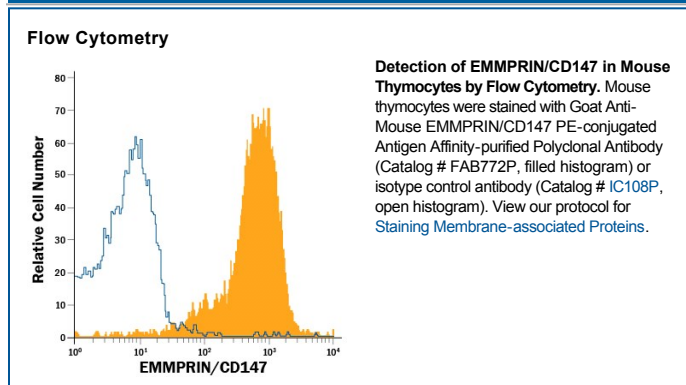
<b>Species Reactivity</b>	Mouse
<b>Specificity</b>	Detects mouse EMMPRIN in direct ELISAs and Western blots. In Western blots, approximately 5% cross-reactivity with recombinant human EMMPRIN is observed.
<b>Source</b>	Polyclonal Goat IgG
<b>Purification</b>	Antigen Affinity-purified
<b>Immunogen</b>	Mouse myeloma cell line NS0-derived recombinant mouse EMMPRIN Ala22-Arg209 Accession # NP_001070652
<b>Conjugate</b>	Phycoerythrin Excitation Wavelength: 488 nm Emission Wavelength: 565-605 nm
<b>Formulation</b>	Supplied in a saline solution containing BSA and Sodium Azide. See Certificate of Analysis for details.  *Contains <0.1% Sodium Azide, which is not hazardous at this concentration according to GHS classifications. Refer to the Safety Data Sheet (SDS) for additional information and handling instructions.

## APPLICATIONS

**Please Note:** Optimal dilutions should be determined by each laboratory for each application. *General Protocols* are available in the *Technical Information* section on our website.

	<b>Recommended Concentration</b>	<b>Sample</b>
<b>Flow Cytometry</b>	10 $\mu$ L/10 <sup>6</sup> cells	See Below

## DATA



## PREPARATION AND STORAGE

<b>Shipping</b>	The product is shipped with polar packs. Upon receipt, store it immediately at the temperature recommended below.
<b>Stability &amp; Storage</b>	<b>Protect from light. Do not freeze.</b> <ul style="list-style-type: none"> <li>● 12 months from date of receipt, 2 to 8 °C as supplied.</li> </ul>

## BACKGROUND

EMMPRIIN, also known as basigin and CD147, is a type I membrane protein belonging to the immunoglobulin superfamily.