

DESCRIPTION

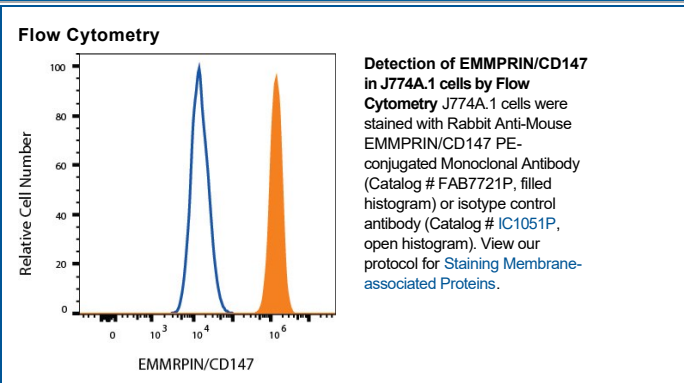
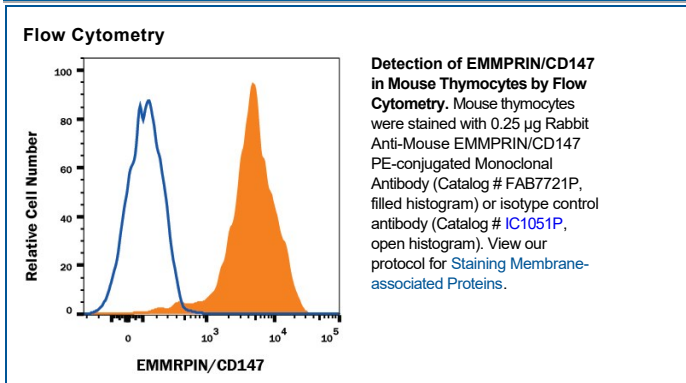
Species Reactivity	Mouse
Specificity	Detects mouse EMMPRIN/CD147 in direct ELISAs.
Source	Recombinant Monoclonal Rabbit IgG Clone # 1159A
Purification	Protein A or G purified from cell culture supernatant
Immunogen	NS0 mouse myeloma cell line transfected with mouse EMMPRIN/CD147 Ala22-Pro209 Accession # P18572
Conjugate	Phycoerythrin Excitation Wavelength: 488 nm Emission Wavelength: 565-605 nm
Formulation	Supplied in a saline solution containing BSA and Sodium Azide. See Certificate of Analysis for details. *Contains <0.1% Sodium Azide, which is not hazardous at this concentration according to GHS classifications. Refer to the Safety Data Sheet (SDS) for additional information and handling instructions.

APPLICATIONS

Please Note: Optimal dilutions should be determined by each laboratory for each application. [General Protocols](#) are available in the Technical Information section on our website.

	Recommended Concentration	Sample
Flow Cytometry	0.25 µg/10 ⁶ cells	See Below

DATA



PREPARATION AND STORAGE

Shipping	The product is shipped with polar packs. Upon receipt, store it immediately at the temperature recommended below.
Stability & Storage	Protect from light. Do not freeze. <ul style="list-style-type: none"> 12 months from date of receipt, 2 to 8 °C as supplied.

BACKGROUND

EMMRPIN, also known as basigin and CD147, is a type I membrane protein belonging to the immunoglobulin superfamily.