

## DESCRIPTION

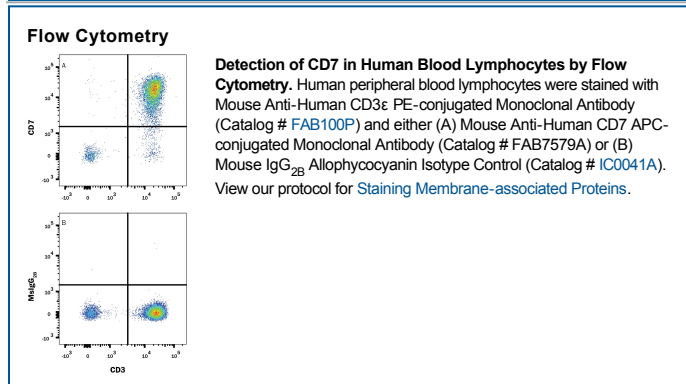
<b>Species Reactivity</b>	Human
<b>Specificity</b>	Detects human CD7 in direct ELISAs. In direct ELISAs, no cross-reactivity with recombinant mouse CD7 is observed.
<b>Source</b>	Monoclonal Mouse IgG <sub>2B</sub> Clone # 848438
<b>Purification</b>	Protein A or G purified from hybridoma culture supernatant
<b>Immunogen</b>	Human embryonic kidney cell line HEK293-derived human CD7 Ala26-Pro180 Accession # P09564
<b>Conjugate</b>	Allophycocyanin Excitation Wavelength: 620-650 nm Emission Wavelength: 660-670 nm
<b>Formulation</b>	Supplied in a saline solution containing BSA and Sodium Azide. See Certificate of Analysis for details.  *Contains <0.1% Sodium Azide, which is not hazardous at this concentration according to GHS classifications. Refer to the Safety Data Sheet (SDS) for additional information and handling instructions.

## APPLICATIONS

**Please Note:** Optimal dilutions should be determined by each laboratory for each application. *General Protocols* are available in the *Technical Information* section on our website.

	Recommended Concentration	Sample
<b>Flow Cytometry</b>	10 µL/10 <sup>6</sup> cells	See Below

## DATA



## PREPARATION AND STORAGE

<b>Shipping</b>	The product is shipped with polar packs. Upon receipt, store it immediately at the temperature recommended below.
<b>Stability &amp; Storage</b>	<b>Protect from light. Do not freeze.</b> <ul style="list-style-type: none"> <li>12 months from date of receipt, 2 to 8 °C as supplied.</li> </ul>

## BACKGROUND

CD7 (Cluster of Differentiation Antigen 7; also Leu-9, TP41 and GP40) is a 40-44 kDa member of the Ig-superfamily of proteins. It shows restricted expression, being found on fetal thymocytes, CD34<sup>+</sup> myeloid and lymphoid progenitor cells, memory CLA- CD45RA<sup>+</sup> T cells, and CD56<sup>+</sup> IFN-γ secreting NK cells. CD7 binds to both SECTM1/K12 and galectin-1, and when bound to the latter, initiates complex formation with CD43 in cis. Activation of CD7 may result in either cell proliferation or apoptosis, suggesting a context-dependent signaling mechanism. Mature human CD7 is a 215 amino acid (aa) type I transmembrane glycoprotein. It contains a 155 aa extracellular region (aa 26-180) that shows one V-type Ig-like domain (aa 26-130), and a 39 aa C-terminal cytoplasmic domain. There is one potential alternative splice variant that contains a 79 aa substitution for aa 133-240. Over aa 26-180, human CD7 shares only 43% aa sequence identity with mouse CD7.