

DESCRIPTION

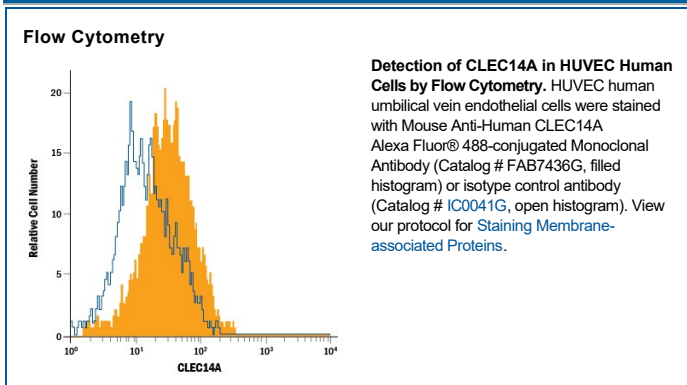
Species Reactivity	Human
Specificity	Detects human CLEC14A in direct ELISAs.
Source	Monoclonal Mouse IgG _{2B} Clone # 743940
Purification	Protein A or G purified from hybridoma culture supernatant
Immunogen	Mouse myeloma cell line NS0-derived recombinant human CLEC14A Glu22-Ala397 Accession # Q86T13
Conjugate	Alexa Fluor 488 Excitation Wavelength: 488 nm Emission Wavelength: 515-545 nm
Formulation	Supplied 0.2 mg/mL in a saline solution containing BSA and Sodium Azide. *Contains <0.1% Sodium Azide, which is not hazardous at this concentration according to GHS classifications. Refer to the Safety Data Sheet (SDS) for additional information and handling instructions.

APPLICATIONS

Please Note: Optimal dilutions should be determined by each laboratory for each application. [General Protocols](#) are available in the Technical Information section on our website.

	Recommended Concentration	Sample
Flow Cytometry	0.25-1 µg/10 ⁶ cells	See Below

DATA



PREPARATION AND STORAGE

Shipping	The product is shipped with polar packs. Upon receipt, store it immediately at the temperature recommended below.
Stability & Storage	Protect from light. Do not freeze. <ul style="list-style-type: none"> 12 months from date of receipt, 2 to 8 °C as supplied.

BACKGROUND

CLEC14A (C-type Lectin Domain Family 14 Member A), also known as EGFR5, is a 51 kDa (predicted) member of the C-type lectin domain family of proteins. It is a type I transmembrane protein, apparently expressed in brain and about which little is known. Mature human CLEC14A is 469 amino acids (aa) in length. It contains a 376 aa extracellular region (aa 22-397) and a 72 aa cytoplasmic domain. The extracellular region shows one C-type lectin like domain (aa 32-175) and an EGF-like region (aa 245-287). Over aa 22-397, human CLEC14A shares 66% and 81% aa identity with mouse and canine CLEC14A, respectively.

Human CLEC14A Alexa Fluor® 488-conjugated Antibody

Monoclonal Mouse IgG_{2B} Clone # 743940

Catalog Number: FAB7436G

100 µg

PRODUCT SPECIFIC NOTICES

This product is provided under an agreement between Life Technologies Corporation and R&D Systems, Inc, and the manufacture, use, sale or import of this product is subject to one or more US patents and corresponding non-US equivalents, owned by Life Technologies Corporation and its affiliates. The purchase of this product conveys to the buyer the non-transferable right to use the purchased amount of the product and components of the product only in research conducted by the buyer (whether the buyer is an academic or for-profit entity). The sale of this product is expressly conditioned on the buyer not using the product or its components (1) in manufacturing; (2) to provide a service, information, or data to an unaffiliated third party for payment; (3) for therapeutic, diagnostic or prophylactic purposes; (4) to resell, sell, or otherwise transfer this product or its components to any third party, or for any other commercial purpose. Life Technologies Corporation will not assert a claim against the buyer of the infringement of the above patents based on the manufacture, use or sale of a commercial product developed in research by the buyer in which this product or its components was employed, provided that neither this product nor any of its components was used in the manufacture of such product. For information on purchasing a license to this product for purposes other than research, contact Life Technologies Corporation, Cell Analysis Business Unit, Business Development, 29851 Willow Creek Road, Eugene, OR 97402, Tel: (541) 465-8300. Fax: (541) 335-0354.