

DESCRIPTION

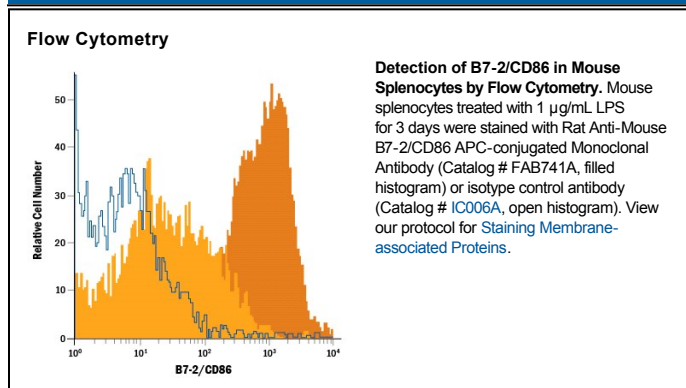
Species Reactivity	Mouse
Specificity	Detects mouse B7-2/CD86 in direct ELISAs and Western blots. In direct ELISAs, no cross-reactivity with recombinant mouse B7-1, recombinant human (rh) B7-1 or rhB7-2 is observed.
Source	Monoclonal Rat IgG _{2A} Clone # GL1
Purification	Protein A or G purified from hybridoma culture supernatant
Immunogen	LPS-activated mouse B cells
Conjugate	Allophycocyanin Excitation Wavelength: 620-650 nm Emission Wavelength: 660-670 nm
Formulation	Supplied in a saline solution containing BSA and Sodium Azide. See Certificate of Analysis for details. *Contains <0.1% Sodium Azide, which is not hazardous at this concentration according to GHS classifications. Refer to the Safety Data Sheet (SDS) for additional information and handling instructions.

APPLICATIONS

Please Note: Optimal dilutions should be determined by each laboratory for each application. *General Protocols* are available in the *Technical Information* section on our website.

	Recommended Concentration	Sample
Flow Cytometry	10 µL/10 ⁶ cells	See Below

DATA



PREPARATION AND STORAGE

Shipping	The product is shipped with polar packs. Upon receipt, store it immediately at the temperature recommended below.
Stability & Storage	Protect from light. Do not freeze. ● 12 months from date of receipt, 2 to 8 °C as supplied.

BACKGROUND

B7-1 and B7-2, together with their receptors CD28 and CTLA-4, constitute one of the dominant costimulatory pathways that regulate T- and B-cell responses. Although both CTLA-4 and CD28 can bind to the same ligands, CTLA-4 binds to B7-1 and B7-2 with a 20-100 fold higher affinity than CD28 and is involved in the down-regulation of the immune response. B7-1 is expressed on activated B cells, activated T cells, and macrophages. B7-2 is constitutively expressed on interdigitating dendritic cells, Langerhans cells, peripheral blood dendritic cells, memory B cells, and germinal center B cells. Additionally, B7-2 is expressed at low levels on monocytes and can be up-regulated through Interferon-γ. B7-1 and B7-2 are both members of the immunoglobulin superfamily. Mouse B7-2 is a 309 amino acid (aa) protein containing a putative 23 aa signal peptide, a 221 aa extracellular domain, a 21 aa transmembrane domain, and a 44 aa cytoplasmic domain. Mouse B7-2 and B7-1 share 28% amino acid identity. Mouse and human B7-2 share 50% amino acid identity. However, it has been observed that both human and mouse B7-1 and B7-2 can bind to either human or mouse CD28 and CTLA-4, suggesting that there are conserved amino acids which form the B7-1/B7-2/CD28/CTLA-4 critical binding sites.

References:

1. Azuma, M. *et al.* (1993) *Nature* **366**:76.
2. Freeman, G.J. *et al.* (1993) *Science* **262**:909.
3. Freeman, G. *et al.* (1991) *J. Exp. Med.* **174**:625.
4. Selvakumar, A. *et al.* (1993) *Immunogenetics* **38**:292.
5. Chen, C. *et al.* (1994) *J. Immunol.* **152**:4929.
6. Freeman, G.J. *et al.* (1993) *J. Exp. Med.* **178**:2185.