

DESCRIPTION

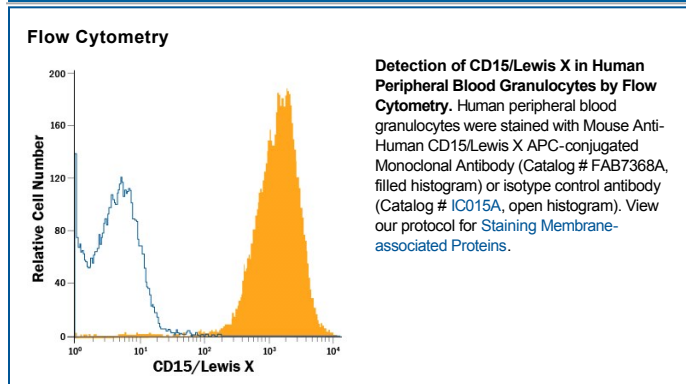
Species Reactivity	Human
Specificity	Detects human CD15/Lewis X in direct ELISAs.
Source	Monoclonal Mouse IgM Clone # ICRF29-2
Purification	IgM-specific Affinity-purified from hybridoma culture supernatant
Immunogen	Human granulocytes
Conjugate	Allophycocyanin Excitation Wavelength: 620-650 nm Emission Wavelength: 660-670 nm
Formulation	Supplied in a saline solution containing BSA and Sodium Azide. See Certificate of Analysis for details. *Contains <0.1% Sodium Azide, which is not hazardous at this concentration according to GHS classifications. Refer to the Safety Data Sheet (SDS) for additional information and handling instructions.

APPLICATIONS

Please Note: Optimal dilutions should be determined by each laboratory for each application. General Protocols are available in the Technical Information section on our website.

	Recommended Concentration	Sample
Flow Cytometry	10 μ L/10 ⁶ cells	See Below

DATA



PREPARATION AND STORAGE

Shipping	The product is shipped with polar packs. Upon receipt, store it immediately at the temperature recommended below.
Stability & Storage	Protect from light. Do not freeze. <ul style="list-style-type: none"> ● 12 months from date of receipt, 2 to 8 °C as supplied.

BACKGROUND

Lewis X (Le^x) is a glycan structure (Gal β 1-4(Fuc α 1-3)GlcNAc β -) that forms the terminus of N-linked carbohydrates such as the antigenic epitope Stage-Specific Embryonic Antigen-1 (SSEA-1/CD15). It is widely expressed, can be found on glycoproteins, glycolipids and proteoglycans and is a blood group antigen. Le^x is a marker for mouse embryonic stem and cancer cells, and is expressed on leukocytes, germ cells and neuronal stem cells in both mouse and human. Le^x is thought to enhance cell adhesion, either directly or by promoting integrin activation.