

## DESCRIPTION

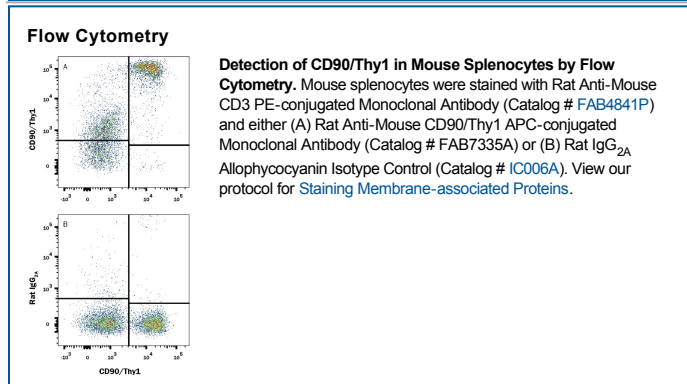
<b>Species Reactivity</b>	Mouse
<b>Specificity</b>	Detects mouse CD90/Thy1 in ELISAs. In direct ELISAs, no cross-reactivity with recombinant human CD90/Thy1 is observed.
<b>Source</b>	Monoclonal Rat IgG <sub>2A</sub> Clone # 778053
<b>Purification</b>	Protein A or G purified from hybridoma culture supernatant
<b>Immunogen</b>	Chinese hamster ovary cell line CHO-derived recombinant mouse CD90/Thy1 Gln20-Lys130 Accession # P01831
<b>Conjugate</b>	Allophycocyanin Excitation Wavelength: 620-650 nm Emission Wavelength: 660-670 nm
<b>Formulation</b>	Supplied in a saline solution containing BSA and Sodium Azide. See Certificate of Analysis for details.  *Contains <0.1% Sodium Azide, which is not hazardous at this concentration according to GHS classifications. Refer to the Safety Data Sheet (SDS) for additional information and handling instructions.

## APPLICATIONS

**Please Note:** Optimal dilutions should be determined by each laboratory for each application. *General Protocols* are available in the *Technical Information* section on our website.

	Recommended Concentration	Sample
<b>Flow Cytometry</b>	10 $\mu$ L/10 <sup>6</sup> cells	See Below

## DATA



## PREPARATION AND STORAGE

<b>Shipping</b>	The product is shipped with polar packs. Upon receipt, store it immediately at the temperature recommended below.
<b>Stability &amp; Storage</b>	<b>Protect from light. Do not freeze.</b> <ul style="list-style-type: none"> <li>12 months from date of receipt, 2 to 8 °C as supplied.</li> </ul>

## BACKGROUND

CD90, also known as Thy1 (THYmocyte differentiation antigen 1) is a GPI-linked glycoprotein expressed by endothelial cells, hematopoietic stem cells, and in developing nervous tissue. Unlike human CD90, mouse CD90 is also highly expressed on T cells and is involved in T cell activation. CD90 may play a role in cell-cell or cell-ligand interactions during synaptogenesis and other events in the brain.