

DESCRIPTION

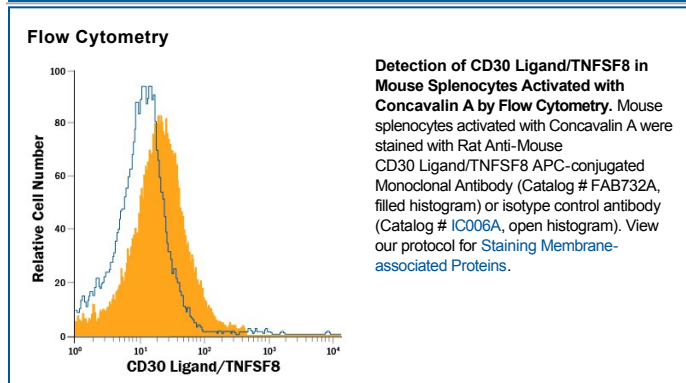
Species Reactivity	Mouse
Specificity	Detects mouse CD30 Ligand/TNFSF8 in ELISAs and Western blots. In sandwich immunoassays, no cross-reactivity or interference with recombinant human (rh) CD30, recombinant mouse (rm) CD30, rhCD40 Ligand, rhFas Ligand, rhTNF- α , rmTNF- α , recombinant rat TNF- α , or rhTNF- β is observed.
Source	Monoclonal Rat IgG _{2A} Clone # 82414
Purification	Protein A or G purified from ascites
Immunogen	Mouse myeloma cell line NS0-derived recombinant mouse CD30 Ligand/TNFSF8 Gln68-Asp239 Accession # P32972
Conjugate	Allophycocyanin Excitation Wavelength: 620-650 nm Emission Wavelength: 660-670 nm
Formulation	Supplied in a saline solution containing BSA and Sodium Azide. See Certificate of Analysis for details. *Contains <0.1% Sodium Azide, which is not hazardous at this concentration according to GHS classifications. Refer to the Safety Data Sheet (SDS) for additional information and handling instructions.

APPLICATIONS

Please Note: Optimal dilutions should be determined by each laboratory for each application. *General Protocols* are available in the *Technical Information* section on our website.

	Recommended Concentration	Sample
Flow Cytometry	10 μ L/10 ⁶ cells	See Below

DATA



PREPARATION AND STORAGE

Shipping	The product is shipped with polar packs. Upon receipt, store it immediately at the temperature recommended below.
Stability & Storage	Protect from light. Do not freeze. <ul style="list-style-type: none"> 12 months from date of receipt, 2 to 8 °C as supplied.

BACKGROUND

CD30 Ligand (CD30L)/TNFSF8 is a 39-40 kDa type II transmembrane glycoprotein that belongs to the TNF superfamily. CD30L is expressed on the cell surface of activated CD3⁺ CD4⁺ CD44⁺ T cells, and constitutively on mature CD11c⁺ CD40⁺ CD86⁺⁺ CCR7⁺ CD plus thymic medullary epithelium, CD4⁺ CD3⁻ CD11c⁻ OX40L⁺ splenic accessory cells, and IL-17 secreting V γ 6 γ delta T cells. Although the protein has also been described on granulocytes, B cells and monocytes, its presence on these cells in mouse is uncertain. The specific receptor for CD30L is CD30/TNFRSF8, a 90-100 kDa type I transmembrane glycoprotein that belongs to the TNF receptor superfamily. CD30 appears on virus-infected T and B cells and normal T and B cells after activation. Among T cells, CD30 is preferentially expressed on a subset of T cells producing Th2-type cytokines and on CD4⁺/CD8⁺ thymocytes that coexpress CD45RO and IL-4 receptor. CD30 ligation by CD30L mediates pleiotropic effects on CD30L-expression cells, including a reduction in IL-2 production and the promotion of IL-17A secretion. CD30 may act as a co-stimulatory molecule in thymic negative selection, and may also play a critical role in the pathophysiology of Hodgkin's disease and other CD30⁺ lymphomas in human. Over aa 68-239, mouse CD30L shares 90% and 75% aa sequence identity with rat and human CD30L, respectively.