

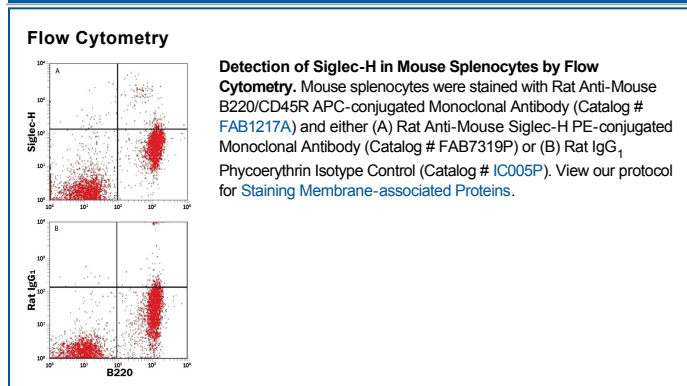
DESCRIPTION	
Species Reactivity	Mouse
Specificity	Detects mouse Siglec-H in flow cytometry.
Source	Monoclonal Rat IgG ₁ Clone # 730407
Purification	Protein A or G purified from hybridoma culture supernatant
Immunogen	Mouse myeloma cell line NS0-derived recombinant mouse Siglec-H Met1-Gly269 Accession # NP_848821
Conjugate	Phycoerythrin Excitation Wavelength: 488 nm Emission Wavelength: 565-605 nm
Formulation	Supplied in a saline solution containing BSA and Sodium Azide. See Certificate of Analysis for details. *Contains <0.1% Sodium Azide, which is not hazardous at this concentration according to GHS classifications. Refer to the Safety Data Sheet (SDS) for additional information and handling instructions.

APPLICATIONS

Please Note: Optimal dilutions should be determined by each laboratory for each application. *General Protocols* are available in the *Technical Information* section on our website.

	Recommended Concentration	Sample
Flow Cytometry	10 μ L/10 ⁶ cells	See Below

DATA



PREPARATION AND STORAGE

Shipping	The product is shipped with polar packs. Upon receipt, store it immediately at the temperature recommended below.
Stability & Storage	Protect from light. Do not freeze. <ul style="list-style-type: none"> 12 months from date of receipt, 2 to 8 °C as supplied.

BACKGROUND

Siglec-H, a murine CD33-related Siglec-like molecule and a member of the Sialic Acid-binding Immunoglobulin (Ig)-like Lectin (Siglec) family, is expressed specifically on Plasmacytoid Dendritic Cell (pDC) precursors in the bone marrow, spleen, blood, and lymph nodes.