

DESCRIPTION

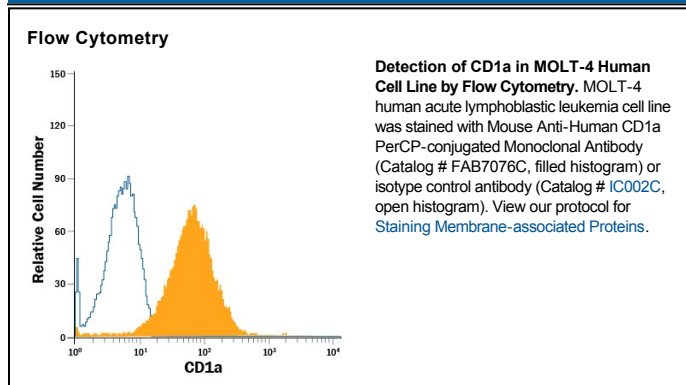
Species Reactivity	Human
Specificity	Detects human CD1a in direct ELISAs. In direct ELISAs, less than 5% cross-reactivity with recombinant human (rh) CD1d is observed and no cross-reactivity with rhCD1b or rhCD1e is observed.
Source	Monoclonal Mouse IgG ₁ Clone # 703217
Purification	Protein A or G purified from hybridoma culture supernatant
Immunogen	Mouse myeloma cell line NS0-derived recombinant human CD1a Asp19-Val300 (predicted) Accession # P06126
Conjugate	PerCP (Peridinin-chlorophyll Protein Complex) Excitation Wavelength: 482 and 564 nm Emission Wavelength: 675 nm
Formulation	Supplied in a saline solution containing BSA and Sodium Azide. See Certificate of Analysis for details. *Contains <0.1% Sodium Azide, which is not hazardous at this concentration according to GHS classifications. Refer to the Safety Data Sheet (SDS) for additional information and handling instructions.

APPLICATIONS

Please Note: Optimal dilutions should be determined by each laboratory for each application. *General Protocols* are available in the *Technical Information* section on our website.

	Recommended Concentration	Sample
Flow Cytometry	10 μ L/10 ⁶ cells	See Below

DATA



PREPARATION AND STORAGE

Shipping	The product is shipped with polar packs. Upon receipt, store it immediately at the temperature recommended below.
Stability & Storage	Protect from light. Do not freeze. <ul style="list-style-type: none"> ● 12 months from date of receipt, 2 to 8 °C as supplied.

BACKGROUND

CD1a is a 49 kDa transmembrane glycoprotein in the CD1 family of glycolipid antigen-presenting MHC-like molecules. CD1a contains one Ig-like domain in its extracellular region. It is expressed by most nonhuman mammals but not by mice or rats. Complexes of CD1a with β 2-microglobulin and endogenous glycolipids are constitutively expressed on antigen presenting cells, cortical thymocytes, and Langerhans cells. CD1a is a target of autoreactive Th22 helper T cells in the skin.