

DESCRIPTION

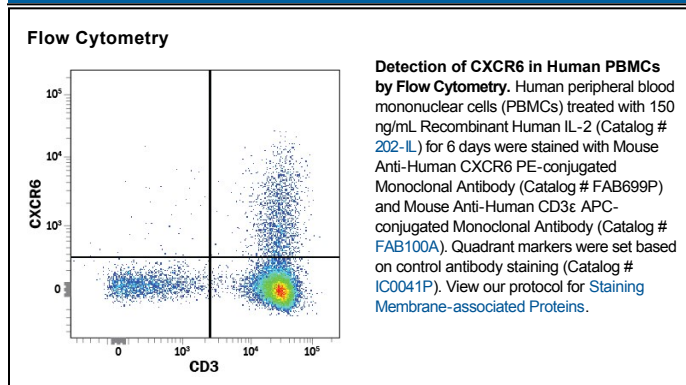
| | |
|---------------------------|--|
| Species Reactivity | Human |
| Specificity | Stains human CXCR6 transfectants but not irrelevant transfectants. |
| Source | Monoclonal Mouse IgG _{2B} Clone # 56811 |
| Purification | Protein A or G purified from ascites |
| Immunogen | NS0 mouse myeloma cell line transfected with human CXCR6 Met1-Leu342 Accession # O00574 |
| Conjugate | Phycoerythrin Excitation Wavelength: 488 nm Emission Wavelength: 565-605 nm |
| Formulation | Supplied in a saline solution containing BSA and Sodium Azide. See Certificate of Analysis for details. *Contains <0.1% Sodium Azide, which is not hazardous at this concentration according to GHS classifications. Refer to the Safety Data Sheet (SDS) for additional information and handling instructions. |

APPLICATIONS

Please Note: Optimal dilutions should be determined by each laboratory for each application. *General Protocols* are available in the *Technical Information* section on our website.

| | Recommended Concentration | Sample |
|-----------------------|----------------------------------|-----------|
| Flow Cytometry | 10 μ L/10 ⁶ cells | See Below |

DATA



PREPARATION AND STORAGE

Shipping The product is shipped with polar packs. Upon receipt, store it immediately at the temperature recommended below.

Stability & Storage **Protect from light. Do not freeze.**

- 12 months from date of receipt, 2 to 8 °C as supplied.

BACKGROUND

CXCR6, also known as Bonzo and STRL33, is a G protein coupled chemokine receptor expressed on activated T cells and tumor-infiltrating lymphocytes. It binds soluble CXCL16 and membrane-anchored CXCL16 expressed on dendritic cells and macrophages.