

DESCRIPTION

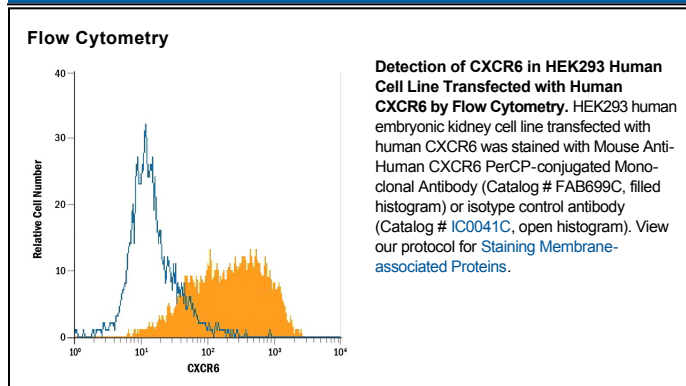
Species Reactivity	Human
Specificity	Stains human CXCR6 transfectants but not irrelevant transfectants.
Source	Monoclonal Mouse IgG _{2B} Clone # 56811
Purification	Protein A or G purified from ascites
Immunogen	NS0 mouse myeloma cell line transfected with human CXCR6 Met1-Leu342 Accession # O00574
Conjugate	PerCP (Peridinin-chlorophyll Protein Complex) Excitation Wavelength: 482 and 564 nm Emission Wavelength: 675 nm
Formulation	Supplied in a saline solution containing BSA and Sodium Azide. See Certificate of Analysis for details. *Contains <0.1% Sodium Azide, which is not hazardous at this concentration according to GHS classifications. Refer to the Safety Data Sheet (SDS) for additional information and handling instructions.

APPLICATIONS

Please Note: Optimal dilutions should be determined by each laboratory for each application. *General Protocols* are available in the *Technical Information* section on our website.

	Recommended Concentration	Sample
Flow Cytometry	10 μ L/10 ⁶ cells	See Below

DATA



PREPARATION AND STORAGE

Shipping	The product is shipped with polar packs. Upon receipt, store it immediately at the temperature recommended below.
Stability & Storage	Protect from light. Do not freeze. <ul style="list-style-type: none"> 12 months from date of receipt, 2 to 8 °C as supplied.

BACKGROUND

CXCR6, also known as Bonzo and STRL33, is a G protein coupled chemokine receptor expressed on activated T cells and tumor-infiltrating lymphocytes. It binds soluble CXCL16 and membrane-anchored CXCL16 expressed on dendritic cells and macrophages.