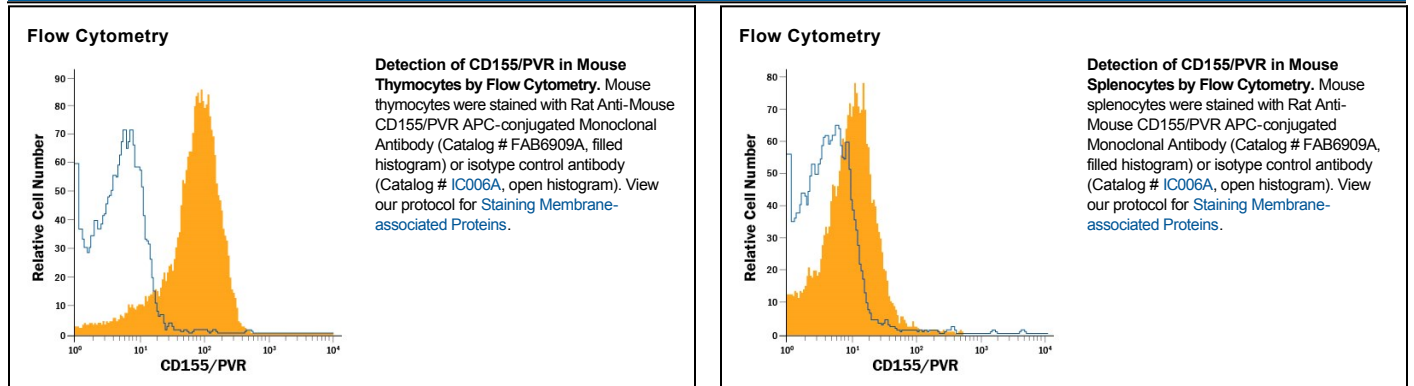


DESCRIPTION	
Species Reactivity	Mouse
Specificity	Detects mouse CD155/PVR in direct ELISAs.
Source	Monoclonal Rat IgG _{2A} Clone # 690912
Purification	Protein A or G purified from hybridoma culture supernatant
Immunogen	Mouse myeloma cell line NS0-derived recombinant mouse CD155/PVR Asp29-Leu348 Accession # NP_081790
Conjugate	Allophycocyanin Excitation Wavelength: 620-650 nm Emission Wavelength: 660-670 nm
Formulation	Supplied in a saline solution containing BSA and Sodium Azide. See Certificate of Analysis for details. *Contains <0.1% Sodium Azide, which is not hazardous at this concentration according to GHS classifications. Refer to the Safety Data Sheet (SDS) for additional information and handling instructions.

APPLICATIONS
Please Note: Optimal dilutions should be determined by each laboratory for each application. General Protocols are available in the Technical Information section on our website.

	Recommended Concentration	Sample
Flow Cytometry	10 μ L/10 ⁶ cells	See Below

DATA



PREPARATION AND STORAGE

Shipping	The product is shipped with polar packs. Upon receipt, store it immediately at the temperature recommended below.
Stability & Storage	Protect from light. Do not freeze. ● 12 months from date of receipt, 2 to 8 °C as supplied.

BACKGROUND

CD155, also known as PVR (Poliovirus Receptor) and Nectin-5 (Nectin-like molecule-5), is a 70 kDa type I transmembrane glycoprotein that binds poliovirus as well as Vitronectin, Nectin-3, and DNAM-1. CD155 contains three Ig-like domains in its extracellular region. It is expressed in a variety of normal tissues and is upregulated in tumor cells of epithelial and neuronal origin. Within aa 29-348 of the extracellular region, mouse CD155 shares 45% and 73% aa sequence identity with human and rat CD155, respectively.