

DESCRIPTION

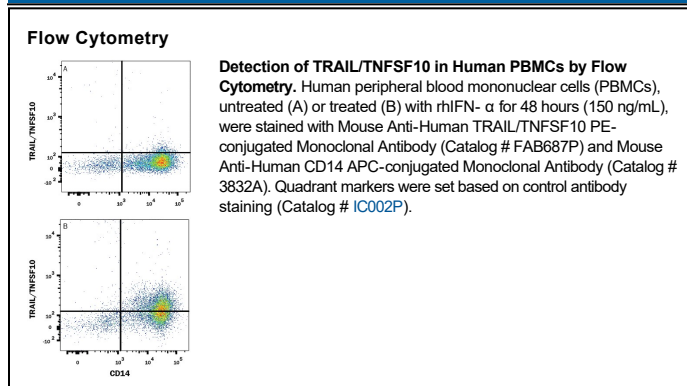
Species Reactivity	Human
Specificity	Detects human TRAIL in direct ELISAs.
Source	Monoclonal Mouse IgG ₁ Clone # 75402
Purification	Protein A or G purified from hybridoma culture supernatant
Immunogen	Mouse myeloma cell line NS0-derived recombinant human TRAIL Thr95-Gly281 Accession # P50591
Conjugate	Phycoerythrin Excitation Wavelength: 488 nm Emission Wavelength: 565-605 nm
Formulation	Supplied in a saline solution containing BSA and Sodium Azide. See Certificate of Analysis for details. *Contains <0.1% Sodium Azide, which is not hazardous at this concentration according to GHS classifications. Refer to the Safety Data Sheet (SDS) for additional information and handling instructions.

APPLICATIONS

Please Note: Optimal dilutions should be determined by each laboratory for each application. *General Protocols* are available in the *Technical Information* section on our website.

	Recommended Concentration	Sample
Flow Cytometry	10 μ L/10 ⁶ cells	See Below

DATA



PREPARATION AND STORAGE

Shipping	The product is shipped with polar packs. Upon receipt, store it immediately at the temperature recommended below.
Stability & Storage	Protect from light. Do not freeze. <ul style="list-style-type: none"> 12 months from date of receipt, 2 to 8 °C as supplied.

BACKGROUND

TRAIL is a type II transmembrane protein belonging to the TNF superfamily and is now designated TNFSF10. TRAIL is active as a homotrimer and is produced by a variety of cell types in both the membrane bound form and also as a soluble molecule. It binds to any of the four TRAIL receptors as well as to Osteoprotegerin.