

DESCRIPTION

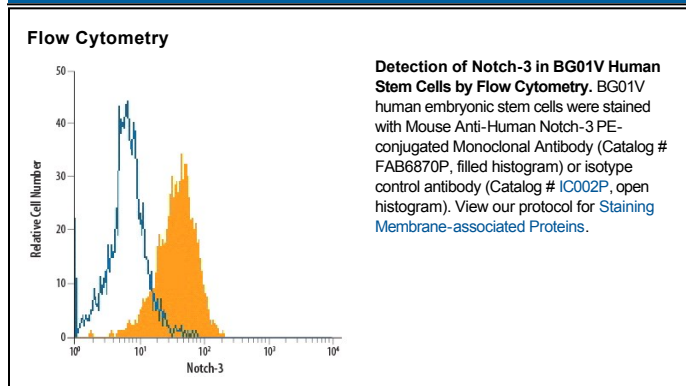
Species Reactivity	Human
Specificity	Detects human Notch-3 in direct ELISAs. In direct ELISAs, no cross-reactivity with recombinant human (rh) Notch-3 ICD (aa 2195-2321), rhNotch-1, rhNotch-1 ICD (aa 2251-2556), rhNotch-2, rhNotch-2 ICD (aa 2063-2413), rhNotch-4, rhNotch-4 ICD (aa 1778-2003), recombinant mouse Notch-3, or recombinant rat DLL1 is observed.
Source	Monoclonal Mouse IgG ₁ Clone # 603532
Purification	Protein A or G purified from hybridoma culture supernatant
Immunogen	<i>S. frugiperda</i> insect ovarian cell line Sf 21-derived recombinant human Notch-3 Ala40-Glu467 Accession # Q9UM47
Conjugate	Phycoerythrin Excitation Wavelength: 488 nm Emission Wavelength: 565-605 nm
Formulation	Supplied in a saline solution containing BSA and Sodium Azide. See Certificate of Analysis for details. *Contains <0.1% Sodium Azide, which is not hazardous at this concentration according to GHS classifications. Refer to the Safety Data Sheet (SDS) for additional information and handling instructions.

APPLICATIONS

Please Note: Optimal dilutions should be determined by each laboratory for each application. [General Protocols](#) are available in the [Technical Information](#) section on our website.

	Recommended Concentration	Sample
Flow Cytometry	10 μ L/10 ⁶ cells	See Below

DATA



PREPARATION AND STORAGE

Shipping	The product is shipped with polar packs. Upon receipt, store it immediately at the temperature recommended below.
Stability & Storage	Protect from light. Do not freeze. <ul style="list-style-type: none"> ● 12 months from date of receipt, 2 to 8 °C as supplied.

BACKGROUND

Human Notch-3 is a member of the Notch family of type I transmembrane glycoproteins involved in early-event developmental processes. The 2321 amino acid (aa) Notch-3 precursor contains a 1603 aa extracellular region with 34 EGF-like repeats. Repeats 1-11 of human Notch-3 are within the sequence used as an immunogen, and share 94% aa identity with mouse and rat Notch-3. Repeats 11 and 12 are critical for binding the ligands Jagged and Delta. Notch-3 is expressed in vascular smooth muscle, proliferating neuroepithelium, CD4⁺CD8⁻ thymocytes, regulatory T cells and T-ALL leukemia cells. Mutations in the first 5 EGF repeats of Notch-3 in humans can cause CADASIL (cerebral autosomal dominant arteriopathy with subcortical infarcts and leukoencephalopathy).