

DESCRIPTION

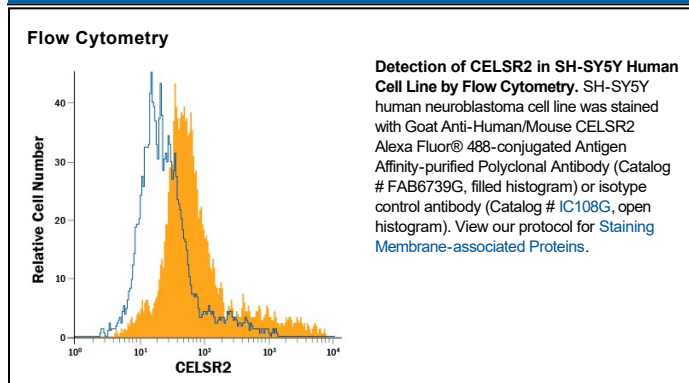
Species Reactivity	Human/Mouse
Specificity	Detects human CELSR2 in direct ELISAs and Western blots. In direct ELISAs, less than 5% cross-reactivity with recombinant human (rh) CELSR1 and rhCELSR3 is observed.
Source	Polyclonal Goat IgG
Purification	Antigen Affinity-purified
Immunogen	<i>E. coli</i> -derived recombinant human CELSR2 Cys51-Phe231 Accession # Q9HCU4
Conjugate	Alexa Fluor 488 Excitation Wavelength: 488 nm Emission Wavelength: 515-545 nm
Formulation	Supplied in a saline solution containing BSA and Sodium Azide. See Certificate of Analysis for details. *Contains <0.1% Sodium Azide, which is not hazardous at this concentration according to GHS classifications. Refer to the Safety Data Sheet (SDS) for additional information and handling instructions.

APPLICATIONS

Please Note: Optimal dilutions should be determined by each laboratory for each application. [General Protocols](#) are available in the Technical Information section on our website.

	Recommended Concentration	Sample
Flow Cytometry	5 µL/10 ⁶ cells	See Below

DATA



PREPARATION AND STORAGE

Shipping	The product is shipped with polar packs. Upon receipt, store it immediately at the temperature recommended below.
Stability & Storage	Protect from light. Do not freeze. ● 12 months from date of receipt, 2 to 8 °C as supplied.

BACKGROUND

CELSR2 (Cadherin EGF LAG seven-pass G-type receptor 2; also cadherin family member 10/CDHF10, Flamingo1 and EGFL2) is a 300-330 kDa member of the LN-7TM subfamily, GPCR 2 family of proteins. It is expressed on neurons, breast epithelium, Sertoli cells and germ cells, and through homophilic interactions, serves as either an adhesion or guidance molecule. Mature human CELSR2 is 2892 amino acids in length (aa 32-2923). It is a highly complex 7-transmembrane protein that contains a 2349 aa extended N-terminal extracellular region (aa 32-2380) plus a 310 aa C-terminal cytoplasmic domain. The N-terminal region contains nine consecutive cadherin domains (aa 182-1146) followed by a mixture of seven EGF-like and three laminin-like domains. There is a proteolytic cleavage site between Met2356-Thr2357 that generates a 250 kDa soluble fragment and a (mature) 60-65 kDa transmembrane segment that may reside on the cell membrane. Over aa 51-231, human CELSR2 shares 93% aa identity with mouse CELSR2.

PRODUCT SPECIFIC NOTICES

This product is provided under an agreement between Life Technologies Corporation and R&D Systems, Inc, and the manufacture, use, sale or import of this product is subject to one or more US patents and corresponding non-US equivalents, owned by Life Technologies Corporation and its affiliates. The purchase of this product conveys to the buyer the non-transferable right to use the purchased amount of the product and components of the product only in research conducted by the buyer (whether the buyer is an academic or for-profit entity). The sale of this product is expressly conditioned on the buyer not using the product or its components (1) in manufacturing; (2) to provide a service, information, or data to an unaffiliated third party for payment; (3) for therapeutic, diagnostic or prophylactic purposes; (4) to resell, sell, or otherwise transfer this product or its components to any third party, or for any other commercial purpose. Life Technologies Corporation will not assert a claim against the buyer of the infringement of the above patents based on the manufacture, use or sale of a commercial product developed in research by the buyer in which this product or its components was employed, provided that neither this product nor any of its components was used in the manufacture of such product. For information on purchasing a license to this product for purposes other than research, contact Life Technologies Corporation, Cell Analysis Business Unit, Business Development, 29851 Willow Creek Road, Eugene, OR 97402, Tel: (541) 465-8300. Fax: (541) 335-0354.