

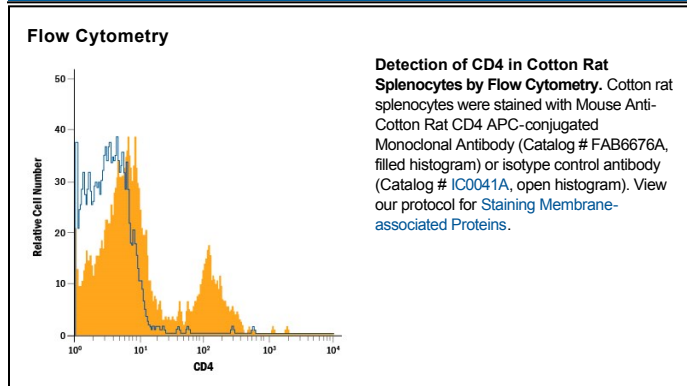
DESCRIPTION	
Species Reactivity	Cotton Rat
Specificity	Detects cotton rat CD4 in direct ELISAs. In direct ELISAs, no cross-reactivity with recombinant CD4 from human, mouse, rat, cat, or dog is observed.
Source	Monoclonal Mouse IgG _{2B} Clone # 695542
Purification	Protein A or G purified from hybridoma culture supernatant
Immunogen	Mouse myeloma cell line NS0-derived recombinant cotton rat CD4 Lys26-Pro393
Conjugate	Allophycocyanin Excitation Wavelength: 620-650 nm Emission Wavelength: 660-670 nm
Formulation	Supplied in a saline solution containing BSA and Sodium Azide. See Certificate of Analysis for details. *Contains <0.1% Sodium Azide, which is not hazardous at this concentration according to GHS classifications. Refer to the Safety Data Sheet (SDS) for additional information and handling instructions.

APPLICATIONS

Please Note: Optimal dilutions should be determined by each laboratory for each application. General Protocols are available in the Technical Information section on our website.

	Recommended Concentration	Sample
Flow Cytometry	10 μ L/10 ⁶ cells	See Below

DATA



PREPARATION AND STORAGE

Shipping	The product is shipped with polar packs. Upon receipt, store it immediately at the temperature recommended below.
Stability & Storage	Protect from light. Do not freeze. <ul style="list-style-type: none"> 12 months from date of receipt, 2 to 8 °C as supplied.

BACKGROUND

CD4 is an approximately 55 kDa type I transmembrane glycoprotein that is expressed predominantly on thymocytes and the Th1, Th2, Th17, Tfh, and Treg subsets of mature T lymphocytes. In human, CD4 is additionally expressed on macrophages, neutrophils, monocytes, NK cells, and neurons and glial cells in the brain. CD4 binding to MHC class II molecules on antigen presenting cells contributes to the formation of the immunological synapse. CD4 also functions as a chemotactic receptor for IL-16 and, in human, as a coreceptor for the gp120 surface glycoprotein of HIV-1.