

#### DESCRIPTION

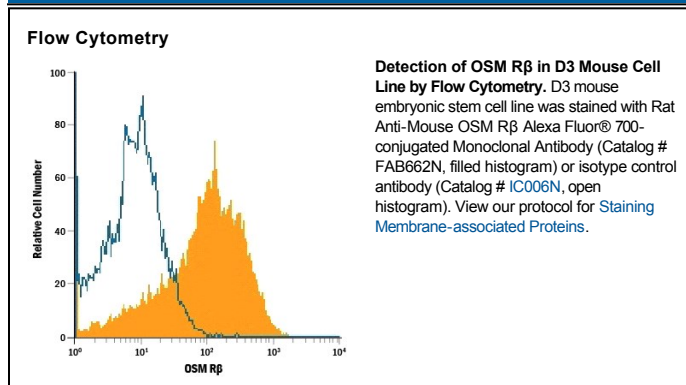
<b>Species Reactivity</b>	Mouse
<b>Specificity</b>	Detects mouse OSM R $\beta$ in direct ELISAs and Western blots. In Western blots, no cross-reactivity with recombinant human (rh) CLC, rhCNTF, rhOSM, recombinant mouse (rm) CT-1, rmIL-6, rmIL-11, or rmLIF is observed.
<b>Source</b>	Monoclonal Rat IgG <sub>2A</sub> Clone # 118125
<b>Purification</b>	Protein A or G purified from hybridoma culture supernatant
<b>Immunogen</b>	Mouse myeloma cell line NS0-derived recombinant mouse OSM R $\beta$ Glu24-Leu738 Accession # O70458
<b>Conjugate</b>	Alexa Fluor 700 Excitation Wavelength: 675-700 nm Emission Wavelength: 723 nm
<b>Formulation</b>	Supplied in a saline solution containing BSA and Sodium Azide. See Certificate of Analysis for details.  *Contains <0.1% Sodium Azide, which is not hazardous at this concentration according to GHS classifications. Refer to the Safety Data Sheet (SDS) for additional information and handling instructions.

#### APPLICATIONS

**Please Note:** Optimal dilutions should be determined by each laboratory for each application. *General Protocols* are available in the *Technical Information* section on our website.

	<b>Recommended Concentration</b>	<b>Sample</b>
<b>Flow Cytometry</b>	5 $\mu$ L/10 <sup>6</sup> cells	See Below

#### DATA



#### PREPARATION AND STORAGE

**Shipping** The product is shipped with polar packs. Upon receipt, store it immediately at the temperature recommended below.

**Stability & Storage** **Protect from light. Do not freeze.**

- 12 months from date of receipt, 2 to 8 °C as supplied.

#### BACKGROUND

Oncostatin M (OSM) is a member of the IL-6 family of cytokines that share the gp130 as a common signal transducing receptor subunit. Human OSM signals through two types of human OSM receptor complexes: the type I complex comprising the leukemia inhibitory factor receptor beta (LIF R $\beta$ ) and gp130, the type II complex made up of OSM Receptor beta (OSM R $\beta$ ) and gp130. In contrast, mouse OSM signals only through the mouse OSM R $\beta$  and gp130 complex. Mouse OSM R $\beta$  cDNA encodes a 971 amino acid (aa) type I transmembrane protein which contains a 23 aa signal peptide, an extracellular domain of 714 aa, a transmembrane domain of 20 aa and a 214 aa cytoplasmic domain. Mouse OSM R $\beta$  alone binds mOSM with low-affinity but forms a high-affinity binding complex in the presence of gp130. Mouse OSM R $\beta$  is 55% identical at the amino acid sequence level to human OSM R $\beta$ .

#### References:

1. Lindberg, R.A. *et al.* (1998) *Mol. Cell. Biol.* **18**:3357.
2. Tanaka, M. *et al.* (1999) *Blood* **93**:804.

**PRODUCT SPECIFIC NOTICES**

This product is provided under an agreement between Life Technologies Corporation and R&D Systems, Inc, and the manufacture, use, sale or import of this product is subject to one or more US patents and corresponding non-US equivalents, owned by Life Technologies Corporation and its affiliates. The purchase of this product conveys to the buyer the non-transferable right to use the purchased amount of the product and components of the product only in research conducted by the buyer (whether the buyer is an academic or for-profit entity). The sale of this product is expressly conditioned on the buyer not using the product or its components (1) in manufacturing; (2) to provide a service, information, or data to an unaffiliated third party for payment; (3) for therapeutic, diagnostic or prophylactic purposes; (4) to resell, sell, or otherwise transfer this product or its components to any third party, or for any other commercial purpose. Life Technologies Corporation will not assert a claim against the buyer of the infringement of the above patents based on the manufacture, use or sale of a commercial product developed in research by the buyer in which this product or its components was employed, provided that neither this product nor any of its components was used in the manufacture of such product. For information on purchasing a license to this product for purposes other than research, contact Life Technologies Corporation, Cell Analysis Business Unit, Business Development, 29851 Willow Creek Road, Eugene, OR 97402, Tel: (541) 465-8300. Fax: (541) 335-0354.