

## DESCRIPTION

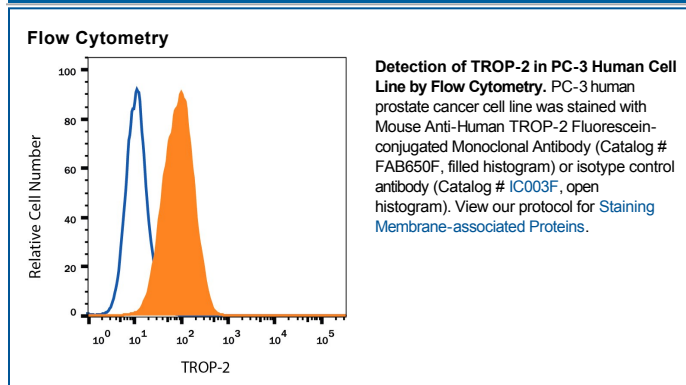
<b>Species Reactivity</b>	Human
<b>Specificity</b>	Detects human TROP-2 in direct ELISAs and Western blots. In direct ELISAs, no cross-reactivity with recombinant human (rh) VCAM-1 or rhICAM-1 is observed.
<b>Source</b>	Monoclonal Mouse IgG <sub>2A</sub> Clone # 77220
<b>Purification</b>	Protein A or G purified from hybridoma culture supernatant
<b>Immunogen</b>	Mouse myeloma cell line NS0-derived recombinant human TROP-2 His27-Thr274 Accession # P09758
<b>Conjugate</b>	Fluorescein Excitation Wavelength: 488 nm Emission Wavelength: 515-545 nm (FITC)
<b>Formulation</b>	Supplied in a saline solution containing BSA and Sodium Azide. See Certificate of Analysis for details.  *Contains <0.1% Sodium Azide, which is not hazardous at this concentration according to GHS classifications. Refer to the Safety Data Sheet (SDS) for additional information and handling instructions.

## APPLICATIONS

**Please Note:** Optimal dilutions should be determined by each laboratory for each application. *General Protocols* are available in the *Technical Information* section on our website.

	Recommended Concentration	Sample
<b>Flow Cytometry</b>	10 µL/10 <sup>6</sup> cells	See Below

## DATA



## PREPARATION AND STORAGE

<b>Shipping</b>	The product is shipped with polar packs. Upon receipt, store it immediately at the temperature recommended below.
<b>Stability &amp; Storage</b>	<b>Protect from light. Do not freeze.</b> <ul style="list-style-type: none"> <li>12 months from date of receipt, 2 to 8 °C as supplied.</li> </ul>

## BACKGROUND

Human TROP-2, also known as Tumor Associated Calcium Signal Transducer 2 (TACSTD2), GA733-1, gp50 and T16, is a type I cell surface glycoprotein that is highly expressed on human carcinomas. It was originally identified as an antigen present on human gastrointestinal tumors and is the second of two members of this family. The other family member is GA733-2, also called EpCAM, TROP-1, 17-1A, gp40 and KSA. The TROP-2 gene is unique in that it contains no introns. A study of these two genes suggested that TROP-2 was the result of a retroposition of the EpCAM gene. TROP-2 and EpCAM share approximately 49% amino acid sequence identity and approximately 67% similarity. Human and mouse TROP-2 share 87% similarity. The human TROP-2 protein consists of a putative 26 amino acid (aa) signal sequence, a 248 aa extracellular domain, a 23 aa transmembrane region and a 26 aa cytoplasmic domain. TROP-2 is capable of transducing an intracellular calcium signal and may play a role in tumor growth. It also has adhesive functions.

## References:

- Linnenbach, A.J. *et al.* (1989) Proc. Natl. Acad. Sci. USA **86**:27.
- Linnenbach, A.J. *et al.* (1993) Mol. Cell. Biol. **13**:1507.
- Fornaro, M. *et al.* (1995) Int. J. Cancer **62**:610.
- Ripani, E. *et al.* (1998) Int. J. Cancer **76**:671.
- El Sewedy, T. *et al.* (1998) Int. J. Cancer **75**:324.