

DESCRIPTION

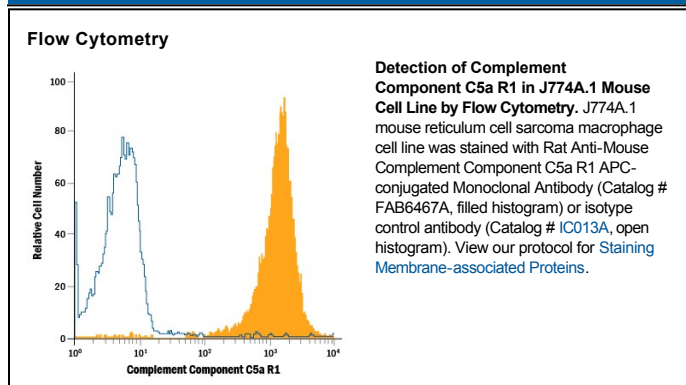
Species Reactivity	Mouse
Specificity	This antibody detects mouse Complement Component C5a R1 in direct ELISAs.
Source	Monoclonal Rat IgG _{2B} Clone # 583837
Purification	Protein A or G purified from hybridoma culture supernatant
Immunogen	NS0 mouse myeloma cell line transfected with mouse Complement Component C5a R1 Accession # P30993
Conjugate	Allophycocyanin Excitation Wavelength: 620-650 nm Emission Wavelength: 660-670 nm
Formulation	Supplied in a saline solution containing BSA and Sodium Azide. See Certificate of Analysis for details. *Contains <0.1% Sodium Azide, which is not hazardous at this concentration according to GHS classifications. Refer to the Safety Data Sheet (SDS) for additional information and handling instructions.

APPLICATIONS

Please Note: Optimal dilutions should be determined by each laboratory for each application. [General Protocols](#) are available in the [Technical Information](#) section on our website.

	Recommended Concentration	Sample
Flow Cytometry	10 μ L/10 ⁶ cells	See Below

DATA



PREPARATION AND STORAGE

Shipping	The product is shipped with polar packs. Upon receipt, store it immediately at the temperature recommended below.
Stability & Storage	Protect from light. Do not freeze. <ul style="list-style-type: none"> ● 12 months from date of receipt, 2 to 8 °C as supplied.

BACKGROUND

Complement Component C5a R1, also known as C5a ligand and CD88, is a 7TM protein expressed on myeloid, endothelial, epithelial, and smooth muscle cells. C5a R1 binds the activated complement anaphylatoxin C5a. In established allergic environments, this triggers neutrophil and eosinophil chemotaxis and the release of proinflammatory mediators. In contrast, C5a R1/C5a interactions are protective during allergen sensitization. Mouse C5a R1 shares 66% and 77% amino acid sequence identity with human and rat C5a R, respectively.