

DESCRIPTION

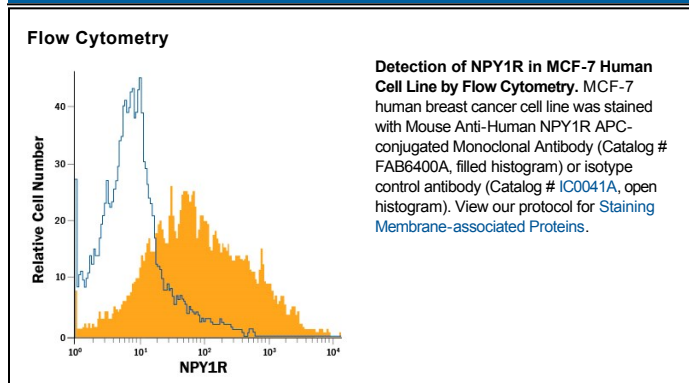
Species Reactivity	Human
Specificity	Detects human NPY1R in direct ELISAs.
Source	Monoclonal Mouse IgG _{2B} Clone # 556153
Purification	Protein A or G purified from hybridoma culture supernatant
Immunogen	NS0 mouse myeloma cell line transfected with human NPY1R Met1-Ile384 Accession # P25929
Conjugate	Allophycocyanin Excitation Wavelength: 620-650 nm Emission Wavelength: 660-670 nm
Formulation	Supplied in a saline solution containing BSA and Sodium Azide. See Certificate of Analysis for details. *Contains <0.1% Sodium Azide, which is not hazardous at this concentration according to GHS classifications. Refer to the Safety Data Sheet (SDS) for additional information and handling instructions.

APPLICATIONS

Please Note: Optimal dilutions should be determined by each laboratory for each application. *General Protocols* are available in the *Technical Information* section on our website.

	Recommended Concentration	Sample
Flow Cytometry	10 μ L/10 ⁶ cells	See Below

DATA



PREPARATION AND STORAGE

Shipping The product is shipped with polar packs. Upon receipt, store it immediately at the temperature recommended below.

Stability & Storage **Protect from light. Do not freeze.**

- 12 months from date of receipt, 2 to 8 °C as supplied.

BACKGROUND

Neuropeptide Y Receptor type 1 (NPY1R) is a 44 kDa (unglycosylated) member of the G protein coupled receptor 1 family. Human NPY1R is 384 amino acids (aa) in length and contains seven transmembrane regions and three potential sites for N-linked glycosylation. In addition, aa 338 is an S-palmitoyl cysteine lipid-binding site and aa 368 is a phosphoserine. Human NPY1R shares 94% and 93% aa sequence identity with mouse and rat NPY1R, respectively. Functionally, NPY1R is a receptor for Neuropeptide Y and Peptide YY.