

## DESCRIPTION

|                           |  |
|---------------------------|--|
| <b>Species Reactivity</b> | Human  |
| <b>Specificity</b>        | Detects human GPRC5D in direct ELISAs. Stains human GPRC5D transfectants but not irrelevant transfectants in flow cytometry.   |
| <b>Source</b>             | Monoclonal Mouse IgG <sub>2B</sub> Clone # 571961  |
| <b>Purification</b>       | Protein A or G purified from hybridoma culture supernatant   |
| <b>Immunogen</b>          | NS0 mouse myeloma cell line transfected with human GPRC5D<br>Met1-Val359<br>Accession # Q9NZD1   |
| <b>Conjugate</b>          | Phycoerythrin<br>Excitation Wavelength: 488 nm<br>Emission Wavelength: 565-605 nm  |
| <b>Formulation</b>        | Supplied in a saline solution containing BSA and Sodium Azide. See Certificate of Analysis for details.<br><br>*Contains <0.1% Sodium Azide, which is not hazardous at this concentration according to GHS classifications. Refer to the Safety Data Sheet (SDS) for additional information and handling instructions. |

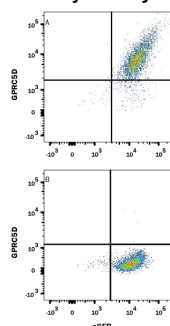
## APPLICATIONS

**Please Note:** Optimal dilutions should be determined by each laboratory for each application. [General Protocols](#) are available in the Technical Information section on our website.

|                       | <b>Recommended Concentration</b> | <b>Sample</b> |
|-----------------------|----------------------------------|---------------|
| <b>Flow Cytometry</b> | 10 µL/10 <sup>6</sup> cells      | See Below     |

## DATA

### Flow Cytometry



**Detection of GPRC5D in HEK293 Human Cell Line Transfected with Human GPRC5D and eGFP by Flow Cytometry.** HEK293 human embryonic kidney cell line transfected with (A) human GPRC5D or (B) irrelevant protein, and eGFP was stained with Mouse Anti-Human GPRC5D PE-conjugated Monoclonal Antibody (Catalog # FAB6300P) or Mouse IgG<sub>2B</sub> PE-conjugated Isotype Control (Catalog # IC0041P, data not shown). View our protocol for [Staining Membrane-associated Proteins](#).

## PREPARATION AND STORAGE

|                                |  |
|--------------------------------|--|
| <b>Shipping</b>                | The product is shipped with polar packs. Upon receipt, store it immediately at the temperature recommended below.                                  |
| <b>Stability &amp; Storage</b> | <b>Protect from light. Do not freeze.</b> <ul style="list-style-type: none"> <li>12 months from date of receipt, 2 to 8 °C as supplied.</li> </ul> |

## BACKGROUND

G-protein coupled receptor family C group 5 member D (GPRC5D) is a retinoic acid-inducible 40 kDa protein with seven transmembrane segments and a short N-terminal extracellular region. It is expressed in keratinizing epithelial cells, the pancreas, kidney, small intestine, spleen, and testis. Alternate splicing generates two additional isoforms with substitutions or truncations in the cytoplasmic tail. Human GPRC5D shares approximately 80% aa sequence identity with mouse and rat GPRC5D.