

## DESCRIPTION

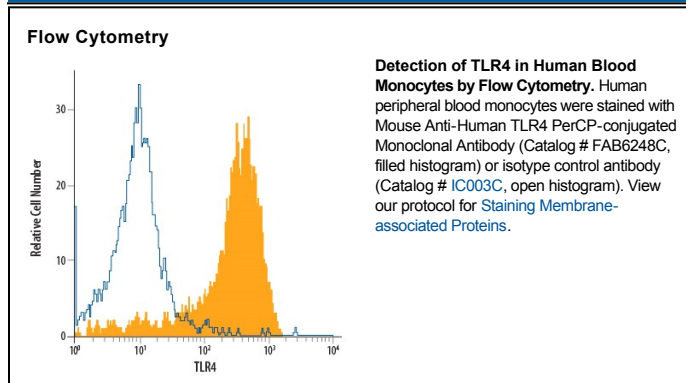
<b>Species Reactivity</b>	Human
<b>Specificity</b>	Detects human TLR4 in direct ELISAs. In direct ELISAs, no cross-reactivity with recombinant human (rh) TLR1, 2, 3, 5, 7, 8, 9, 10, recombinant mouse (rm) TLR4, rmTLR6, rhTIRAP, rhIL-1 R1, rhIL-1 RII, rhIL-1 RAcP, rhST2, rhIL-18 R, rhIL-1 Rrp2, rhIL-18 R $\beta$ , rhSIGIRR, rhIL-1 RAPL1, rhIL-1 RAPL2, rhMD-1, rhMD-2, or rmRP105 is observed.
<b>Source</b>	Monoclonal Mouse IgG <sub>2A</sub> Clone # 610015
<b>Purification</b>	Protein A or G purified from hybridoma culture supernatant
<b>Immunogen</b>	Mouse myeloma cell line NS0-derived recombinant human TLR4 Glu24-Lys631 Accession # O00206
<b>Conjugate</b>	PerCP (Peridinin-chlorophyll Protein Complex) Excitation Wavelength: 482 and 564 nm Emission Wavelength: 675 nm
<b>Formulation</b>	Supplied in a saline solution containing BSA and Sodium Azide. See Certificate of Analysis for details.  *Contains <0.1% Sodium Azide, which is not hazardous at this concentration according to GHS classifications. Refer to the Safety Data Sheet (SDS) for additional information and handling instructions.

## APPLICATIONS

**Please Note:** Optimal dilutions should be determined by each laboratory for each application. *General Protocols* are available in the *Technical Information* section on our website.

	Recommended Concentration	Sample
<b>Flow Cytometry</b>	10 $\mu$ L/10 <sup>6</sup> cells	See Below

## DATA



## PREPARATION AND STORAGE

<b>Shipping</b>	The product is shipped with polar packs. Upon receipt, store it immediately at the temperature recommended below.
<b>Stability &amp; Storage</b>	<b>Protect from light. Do not freeze.</b> <ul style="list-style-type: none"> <li>12 months from date of receipt, 2 to 8 °C as supplied.</li> </ul>

## BACKGROUND

Toll-Like Receptor (TLR4) belongs to the IL-1 receptor/Toll-like receptor superfamily. It is expressed in placenta and peripheral blood leukocytes. TLR4 is the pattern recognition receptor for LPS.