

#### DESCRIPTION

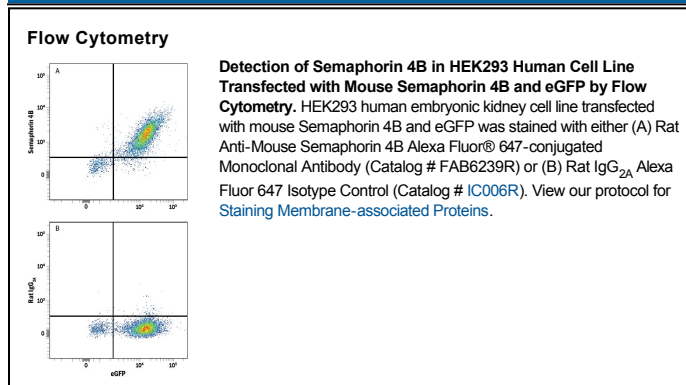
<b>Species Reactivity</b>	Mouse
<b>Specificity</b>	Detects mouse Semaphorin 4B in direct ELISAs. Stains mouse Semaphorin 4B transfectants but not irrelevant transfectants in flow cytometry.
<b>Source</b>	Monoclonal Rat IgG <sub>2A</sub> Clone # 761915
<b>Purification</b>	Protein A or G purified from hybridoma culture supernatant
<b>Immunogen</b>	Mouse myeloma cell line NS0-derived recombinant mouse Semaphorin 4B Leu31-Glu703 Accession # NP_038687
<b>Conjugate</b>	Alexa Fluor 647 Excitation Wavelength: 650 nm Emission Wavelength: 668 nm
<b>Formulation</b>	Supplied in a saline solution containing BSA and Sodium Azide. See Certificate of Analysis for details.  *Contains <0.1% Sodium Azide, which is not hazardous at this concentration according to GHS classifications. Refer to the Safety Data Sheet (SDS) for additional information and handling instructions.

#### APPLICATIONS

**Please Note:** Optimal dilutions should be determined by each laboratory for each application. *General Protocols* are available in the *Technical Information* section on our website.

	<b>Recommended Concentration</b>	<b>Sample</b>
<b>Flow Cytometry</b>	5 $\mu$ L/10 <sup>6</sup> cells	See Below

#### DATA



#### PREPARATION AND STORAGE

<b>Shipping</b>	The product is shipped with polar packs. Upon receipt, store it immediately at the temperature recommended below.
<b>Stability &amp; Storage</b>	<b>Protect from light. Do not freeze.</b> <ul style="list-style-type: none"> <li>● 12 months from date of receipt, 2 to 8 °C as supplied.</li> </ul>

#### BACKGROUND

Semaphorin 4B (Sema4B; also SemaC) is a 95–100 kDa, class IV member of the semaphorin family of proteins. It is expressed in neurons, and following PSD-95 induced clustering, participates in the formation or functioning of glutamatergic synapses. Mature mouse Sema4B is a type I transmembrane glycoprotein that is 793 amino acids (aa) in length. It contains a 673 aa extracellular region (aa 31–703) that is characterized by one Sema domain (aa 57–492), a PSI region (aa 512–582), and an Ig-like C2-type domain (aa 589–649). There are three phosphoserines in the cytoplasmic tail. Over aa 31–703, mouse Sema4B shares 86% and 95% aa identity with human and rat Sema4B, respectively.

# Mouse Semaphorin 4B Alexa Fluor® 647 - conjugated Antibody

Monoclonal Rat IgG<sub>2A</sub> Clone # 761915

Catalog Number: FAB6239R  
25 TESTS

## PRODUCT SPECIFIC NOTICES

This product is provided under an agreement between Life Technologies Corporation and R&D Systems, Inc, and the manufacture, use, sale or import of this product is subject to one or more US patents and corresponding non-US equivalents, owned by Life Technologies Corporation and its affiliates. The purchase of this product conveys to the buyer the non-transferable right to use the purchased amount of the product and components of the product only in research conducted by the buyer (whether the buyer is an academic or for-profit entity). The sale of this product is expressly conditioned on the buyer not using the product or its components (1) in manufacturing; (2) to provide a service, information, or data to an unaffiliated third party for payment; (3) for therapeutic, diagnostic or prophylactic purposes; (4) to resell, sell, or otherwise transfer this product or its components to any third party, or for any other commercial purpose. Life Technologies Corporation will not assert a claim against the buyer of the infringement of the above patents based on the manufacture, use or sale of a commercial product developed in research by the buyer in which this product or its components was employed, provided that neither this product nor any of its components was used in the manufacture of such product. For information on purchasing a license to this product for purposes other than research, contact Life Technologies Corporation, Cell Analysis Business Unit, Business Development, 29851 Willow Creek Road, Eugene, OR 97402, Tel: (541) 465-8300. Fax: (541) 335-0354.