

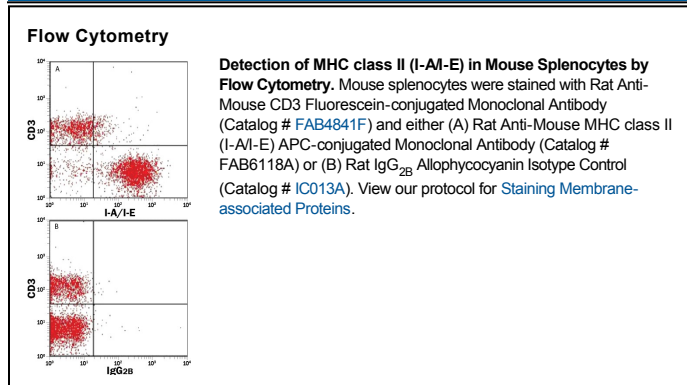
DESCRIPTION	
Species Reactivity	Mouse
Specificity	Detects mouse MHC class II (I-A/I-E) in flow cytometry.
Source	Monoclonal Rat IgG _{2B} Clone # M5/114.15.2
Purification	Protein A or G purified from hybridoma culture supernatant
Immunogen	Activated C57BL/6 mouse spleen cells
Conjugate	Allophycocyanin Excitation Wavelength: 620-650 nm Emission Wavelength: 660-670 nm
Formulation	Supplied in a saline solution containing BSA and Sodium Azide. See Certificate of Analysis for details. *Contains <0.1% Sodium Azide, which is not hazardous at this concentration according to GHS classifications. Refer to the Safety Data Sheet (SDS) for additional information and handling instructions.

APPLICATIONS

Please Note: Optimal dilutions should be determined by each laboratory for each application. *General Protocols* are available in the *Technical Information* section on our website.

	Recommended Concentration	Sample
Flow Cytometry	10 μ L/10 ⁶ cells	See Below

DATA



PREPARATION AND STORAGE

Shipping	The product is shipped with polar packs. Upon receipt, store it immediately at the temperature recommended below.
Stability & Storage	Protect from light. Do not freeze. ● 12 months from date of receipt, 2 to 8 °C as supplied.

BACKGROUND

The M5/114.15.2 monoclonal antibody recognizes a homologous region of MHC class II associated I-A and I-E antigens (1). It binds a region shared by I-A^b, I-A^d, I-A^g, I-E^d and I-E^k MHC class II antigens, which are expressed on antigen presenting cells (2).

References:

1. Bhattacharya, A. *et al.* (1981) J. Immunol. **127**:2448.
2. Watts, C. *et al.* (1997) Ann. Rev. Immunol. **15**:821.