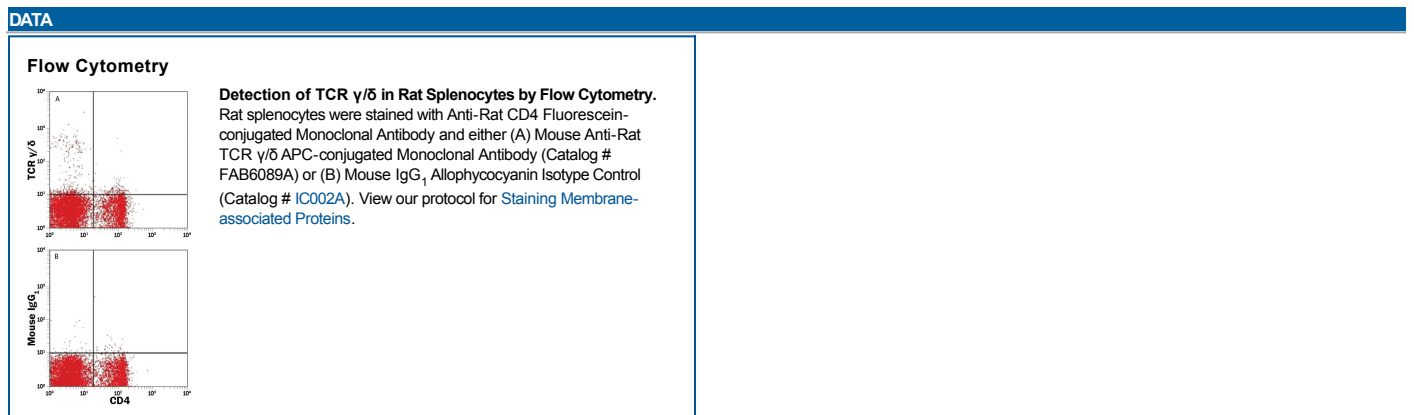


DESCRIPTION	
<b>Species Reactivity</b>	Rat
<b>Specificity</b>	Detects rat TCR $\gamma/\delta$ in flow cytometry.
<b>Source</b>	Monoclonal Mouse IgG <sub>1</sub> Clone # V65
<b>Purification</b>	Protein A or G purified from hybridoma culture supernatant
<b>Immunogen</b>	CD3 <sup>+</sup> TCR $\alpha/\beta$ <sup>-</sup> rat T cell hybridoma line
<b>Conjugate</b>	Allophycocyanin Excitation Wavelength: 620-650 nm Emission Wavelength: 660-670 nm
<b>Formulation</b>	Supplied in a saline solution containing BSA and Sodium Azide. See Certificate of Analysis for details.  *Contains <0.1% Sodium Azide, which is not hazardous at this concentration according to GHS classifications. Refer to the Safety Data Sheet (SDS) for additional information and handling instructions.

APPLICATIONS		
<b>Please Note:</b> Optimal dilutions should be determined by each laboratory for each application. <i>General Protocols</i> are available in the <i>Technical Information</i> section on our website.		
	<b>Recommended Concentration</b>	<b>Sample</b>
<b>Flow Cytometry</b>	10 $\mu$ L/10 <sup>6</sup> cells	See Below



PREPARATION AND STORAGE	
<b>Shipping</b>	The product is shipped with polar packs. Upon receipt, store it immediately at the temperature recommended below.
<b>Stability &amp; Storage</b>	<b>Protect from light. Do not freeze.</b> <ul style="list-style-type: none"> <li>12 months from date of receipt, 2 to 8 °C as supplied.</li> </ul>

BACKGROUND	
TCR $\gamma/\delta$ is associated with CD3 and expressed on a subset of T cells in the thymus, spleen, lymph node, and intestinal epithelium.	
<b>References:</b>	
1. Kuhnlein, P. et al. (1994) J. Immunol. 153:979.	