

DESCRIPTION

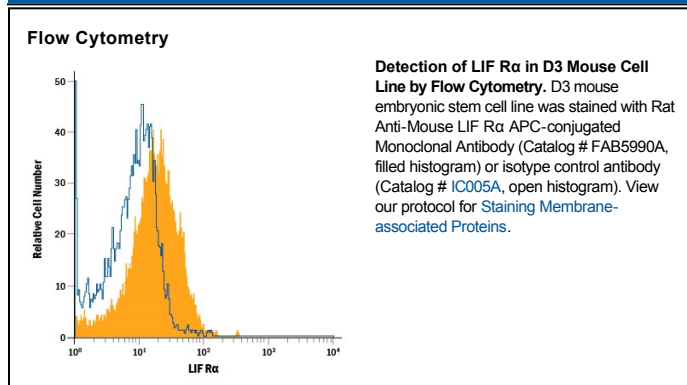
Species Reactivity	Mouse
Specificity	Detects mouse LIF R α in direct ELISAs. In direct ELISAs, no cross-reactivity with recombinant human LIF R α is observed.
Source	Monoclonal Rat IgG ₁ Clone # 673602
Purification	Protein A or G purified from hybridoma culture supernatant
Immunogen	Mouse myeloma cell line NS0-derived recombinant mouse LIF R α Leu44-Ser828 Accession # P42703
Conjugate	Allophycocyanin Excitation Wavelength: 620-650 nm Emission Wavelength: 660-670 nm
Formulation	Supplied in a saline solution containing BSA and Sodium Azide. See Certificate of Analysis for details. *Contains <0.1% Sodium Azide, which is not hazardous at this concentration according to GHS classifications. Refer to the Safety Data Sheet (SDS) for additional information and handling instructions.

APPLICATIONS

Please Note: Optimal dilutions should be determined by each laboratory for each application. *General Protocols* are available in the *Technical Information* section on our website.

	Recommended Concentration	Sample
Flow Cytometry	10 μ L/10 ⁶ cells	See Below

DATA



PREPARATION AND STORAGE

Shipping	The product is shipped with polar packs. Upon receipt, store it immediately at the temperature recommended below.
Stability & Storage	Protect from light. Do not freeze. <ul style="list-style-type: none"> ● 12 months from date of receipt, 2 to 8 °C as supplied.

BACKGROUND

Leukemia Inhibitory Factor Receptor alpha (LIF R α), also known as LIFR beta (due to its participation in signal transduction) and CD118, is a 190 kDa type I transmembrane protein in the Interleukin-6 receptor family. Members of this family mediate the biological effects of Cardiotrophin-1, CLC, CNTF, IL-6, IL-11, IL-27, and Oncostatin M (1). Mature mouse LIF R α consists of a 785 amino acid (aa) extracellular domain (ECD) with two cytokine receptor homology domains, one WSxWS motif, and three fibronectin type III repeats, followed by a 25 aa transmembrane segment and a 239 aa cytoplasmic domain (2, 3). Within the ECD, mouse LIF R α shares 73% and 90% aa sequence identity with human and rat LIF R α , respectively. Alternative splicing generates a 90 kDa soluble form of the mouse LIF R α ECD (4). LIF R α binds the pleiotropic cytokine LIF with low affinity, and the soluble isoform retains LIF-binding activity (5). Binding affinity is increased by the ligand-induced association of LIF R α with the signal transducing subunit gp130 (6, 7). The LIF R α /gp130 receptor complex also transduces Oncostatin M signals, although LIF R α alone does not interact with Oncostatin M (6). gp130 associates with different ligand-specific receptors to form signaling receptor complexes for the other IL-6 family ligands (1). The CNTF receptor is a ternary complex that contains CNTF R α and gp130 as well as LIF R α (8, 9). LIF R α is widely expressed, and LIF induces the proliferation, differentiation, and activation of cells in many tissues (10, 11). In particular, LIF R α plays an important role in several aspects of early pregnancy such as blastocyst implantation in the uterus (4, 12-14).

References:

1. Muller-Newen, G. (2003) *Science STKE* **2003**:pe40.
2. Gearing, D.P. *et al.* (1991) *EMBO J.* **10**:2839.
3. Tomida, M. *et al.* (1994) *J. Biochem.* **115**:557.
4. Owczarek, C.M. *et al.* (1996) *J. Biol. Chem.* **271**:5495.
5. Layton, M.J. *et al.* (1992) *Proc. Natl. Acad. Sci. USA* **89**:8616.
6. Gearing, D.P. *et al.* (1992) *Science* **255**:1434.
7. Giese, B. *et al.* (2005) *J. Cell Sci.* **118**:5129.
8. Ip, N.Y. *et al.* (1992) *Cell* **69**:1121.
9. Davis, S. *et al.* (1993) *Science* **260**:1805.
10. Metcalf, D (2003) *Stem Cells* **21**:5.
11. Kubota, Y. *et al.* (2008) *J. Clin. Invest.* **118**:2393.
12. Paiva, P. *et al.* (2009) *Cytokine Growth Factor Rev.* **20**:319.
13. Stewart, C.L. *et al.* (1992) *Nature* **359**:76.
14. Cheng, J.-G. *et al.* (2001) *Proc. Natl. Acad. Sci. USA* **98**:8680.