

## DESCRIPTION

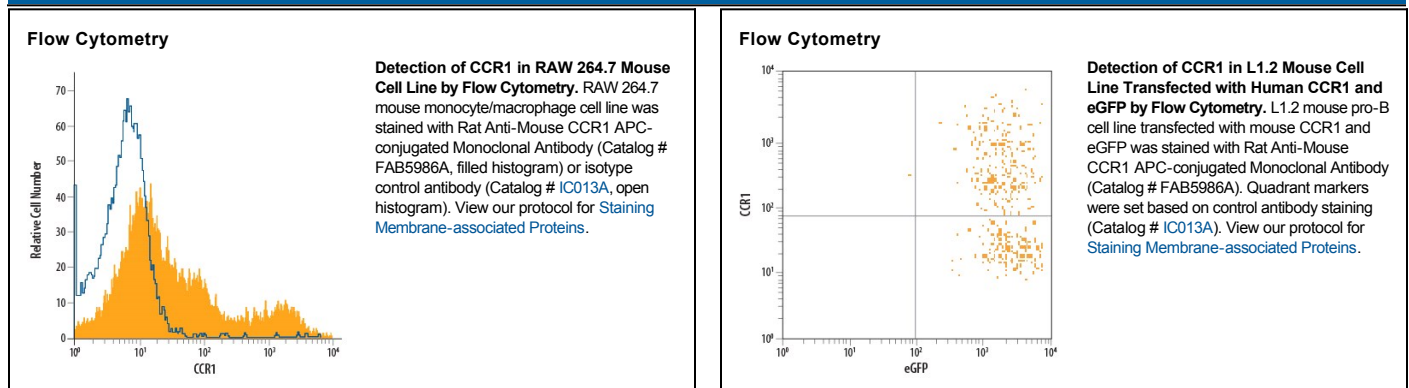
|                           |  |
|---------------------------|--|
| <b>Species Reactivity</b> | Mouse  |
| <b>Specificity</b>        | Detects mouse CCR1 in direct ELISAs and Western blots. In direct ELISAs and Western blots, no cross-reactivity with recombinant mouse CCR4, 5, or 8 is observed.   |
| <b>Source</b>             | Monoclonal Rat IgG <sub>2B</sub> Clone # 643854  |
| <b>Purification</b>       | Protein A or G purified from hybridoma culture supernatant   |
| <b>Immunogen</b>          | <i>E. coli</i> -derived recombinant mouse CCR1<br>Extracellular regions (aa 1-34, aa 92-107, aa 172-192, aa 265-281)<br>Accession # P51675   |
| <b>Conjugate</b>          | Allophycocyanin<br>Excitation Wavelength: 620-650 nm<br>Emission Wavelength: 660-670 nm  |
| <b>Formulation</b>        | Supplied in a saline solution containing BSA and Sodium Azide. See Certificate of Analysis for details.<br><br>*Contains <0.1% Sodium Azide, which is not hazardous at this concentration according to GHS classifications. Refer to the Safety Data Sheet (SDS) for additional information and handling instructions. |

## APPLICATIONS

**Please Note:** Optimal dilutions should be determined by each laboratory for each application. *General Protocols* are available in the *Technical Information* section on our website.

|                       | Recommended Concentration        | Sample    |
|-----------------------|----------------------------------|-----------|
| <b>Flow Cytometry</b> | 10 $\mu$ L/10 <sup>6</sup> cells | See Below |

## DATA



## PREPARATION AND STORAGE

|                                |  |
|--------------------------------|--|
| <b>Shipping</b>                | The product is shipped with polar packs. Upon receipt, store it immediately at the temperature recommended below.                                    |
| <b>Stability &amp; Storage</b> | <b>Protect from light. Do not freeze.</b> <ul style="list-style-type: none"> <li>● 12 months from date of receipt, 2 to 8 °C as supplied.</li> </ul> |

## BACKGROUND

CCR1 (C-C chemokine receptor 1; also MIP-1a receptor and CD191) is a 43 kDa member of the GPCR #1 family of transmembrane proteins. Mouse CCR1 is expressed on osteoclasts, IL-13\* T cells, neutrophils, bone marrow-derived mast cells, eosinophils, monocytes and vascular intimal smooth muscle cells. Multiple chemokines are reported to bind to CCR1. MIP-1a/CCL3 and RANTES/CCL5 are natural ligands, while CCL15, CCL9 and CCL23 are potent antagonists after N-terminal processing. Mouse CCR1 is a 7-transmembrane protein that is 355 amino acids (aa) in length. It contains a 34 aa N-terminal extracellular domain plus a 50 aa C-terminal cytoplasmic tail. Over aa sequences 1-34, 92-107, 172-192 and 265-281 collectively, mouse CCR1 shares 76% and 89% aa identity with human and rat CCR1, respectively.