

DESCRIPTION

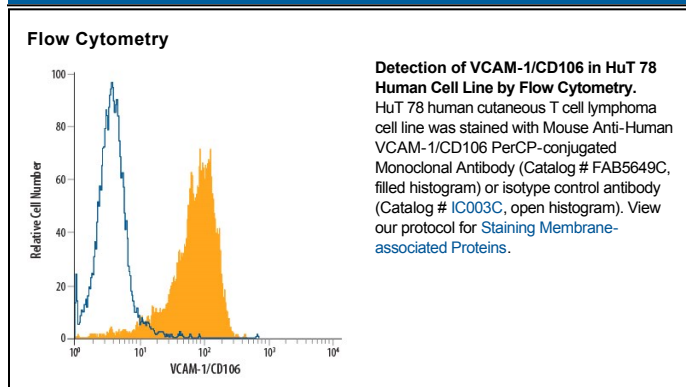
Species Reactivity	Human
Specificity	The antibody was screened using COS cells transfected with cDNAs for E-Selectin, VCAM-1, ICAM-1 and PECAM-1 and was shown to be specific for human VCAM-1/CD106.
Source	Monoclonal Mouse IgG _{2A} Clone # IE10
Purification	Protein A or G purified from ascites
Immunogen	Activated HUVEC human umbilical vein endothelial cells
Conjugate	PerCP (Peridinin-chlorophyll Protein Complex) Excitation Wavelength: 482 and 564 nm Emission Wavelength: 675 nm
Formulation	Supplied in a saline solution containing BSA and Sodium Azide. See Certificate of Analysis for details. *Contains <0.1% Sodium Azide, which is not hazardous at this concentration according to GHS classifications. Refer to the Safety Data Sheet (SDS) for additional information and handling instructions.

APPLICATIONS

Please Note: Optimal dilutions should be determined by each laboratory for each application. [General Protocols](#) are available in the [Technical Information](#) section on our website.

	Recommended Concentration	Sample
Flow Cytometry	10 μ L/10 ⁶ cells	See Below

DATA



PREPARATION AND STORAGE

Shipping	The product is shipped with polar packs. Upon receipt, store it immediately at the temperature recommended below.
Stability & Storage	Protect from light. Do not freeze. <ul style="list-style-type: none"> ● 12 months from date of receipt, 2 to 8 °C as supplied.

BACKGROUND

Vascular cell adhesion molecule 1 (VCAM-1) is expressed on the surface of activated endothelial cells and macrophages. It binds to leukocyte integrins VLA-4 and α 4 β 7 to promote leukocyte adhesion at sites of inflamed vasculature.